

Technical Specification

PK 165.002 TEC 7

(S533-SK-A)

Edition 09/2015

PALFINGER AG
Lamprechtshausener Bundesstraße 8
5101 Bergheim / Austria
www.palfinger.com

-->123456789	Valid to crane number		
123456789-->	Valid from crane number		
Page-A	Control valve side		
Page-B	Counter control side		
page name...NA	North America		
X	Installation width without hose-equipment		
2, 4, 2/4	Installation width with hose-equipment		
ABST	Support	R	without extension box
		R0	One side extension box
		R1	Both side extension box
		R2	Both side extension box - extended
		R3	Extension box telescopic
		R4	Both side extension box - extended
		R...X	Both side extension box - hydraulic
		R...XH	Both side extension box - hydraulic, heavy
		SR...	Support controllable from top seat
CWC	Comfort Winch Control	RTC	Rope Tension Control
		SRC	Synchronized Rope Control
DPS	Dual Power System	DPSP,DPS+	Dual Power System Plus
		DPS-C	Dual Power System Continuously
EINS	Pull-in part	EIN...	Pull-in part (J103E01SA)
FERN	Remote control	FFST	Radio remote control
GRA	Type - crane Base	LKW	Mounting LKW
		SAT	Semi-trailer installation
		EGG	Integrated base
HEC	Rear-stabilizer	HEC02	with control valve
		HSTZY	Hydraulically tiltable stabilizer cylinder
HEM	Rear module		Standard
HKONS	Top seat FFST	HK001	Standard seat
		HK002	Tiltable seat
		HK003	Seat with heater
		HK004	Folding seat with heater
HOST	Top seat - control	KL0	Linear lever control
		KK1	Cross lever control
HPLS	High Power Lifting System	EHPLS	High Power Lifting System
		SHPLS	Super High Power Lifting System
		MHPLS	manually High Power Lifting System
HSITZ	Top seat - standard	HS005	Tiltable seat
		HS012	Standard seat
HYA, PJHY	Hydraulic extensions	()	Crane with one hydraulic extension boom
		A	Crane with 2 hydraulic extension booms
		B	Crane with 3 hydraulic extension booms
		C	Crane with 4 hydraulic extension booms
		D	Crane with 5 hydraulic extension booms
		E	Crane with 6 hydraulic extension booms
		F	Crane with 7 hydraulic extension booms
		G	Crane with 8 hydraulic extension booms
		H	Crane with 9 hydraulic extension booms
IG	Railing	IG001	3 port
		IG002	2 port
IKONS	Standing platform FFST	IK002	without IS001, with IG001
		IK004	with IS001, IG001
		IK006	with IS002, IG001
IS	Limitation of rotation I	IS001	Limitation of rotation over I
		IS002	Limitation of rotation, main boom over I
		IS003	Limitation of rotation over FL

Signs and symbols - abbreviation

ISC	Integrated Stability Control	ISC01	Support control+SHB
		ISC-S	ISC standard
		ISC-L	ISC light+SHB
		HPSC	continuous High Performance Stability Control
		HPSC-L	High Performance Stability Control light
		HPSC-E	continuous High Performance Stability Control light
OELKU	Oil cooler	ÖLK01	Oil cooler 8.5kW, mounted
		ÖLK02	Oil cooler 10.5kW, loose
		ÖLK03	Oil cooler 8.5kW, loose
		ÖLK04	Oil cooler 20kW, mounted
		ÖLK05	Oil cooler 20kW, loose
		ÖLK07	Oil cooler 10.5kW, mounted
PAL	Paltronic	PT050	Paltronic 50
		PT150	Paltronic 150
PJ	Fly-Jib		Fly-Jib
PJHY	Hydraulic extensions		see HYA
PJKSL	Hose-equipment PJ	J02	1 Auxiliary equipment
		J04	2 Auxiliary equipments
PJV	Extension	JV...	see V
PUMPE	Type - pump	PU002	Fixed displacement pump
		PU003	Variable displacement pump
		MH	Combustion motor
		EH	Electric motor
S	Rope winch	SH	without limiting switch - main boom
		SHE	with limiting switch - main boom
		SK	without limiting switch - outer boom
		SKE	with limiting switch - outer boom
		SHEK	Power link rope winch (hydraulic tiltable at main boom)
SHB	Slew angle dependent capacity limitation	SHB01	with one pressure range
		SHB07	with 2 pressure ranges + jumper
SKUPP	Quick-coupling	MULTI1	Quick-coupling, crane
	Multifaster	MULTI2	Quick-coupling, PJ
		MULTI3	Quick-coupling, crane + PJ
SL	Hose-equipment	2	1 Auxiliary equipment - hose tray
		4	2 Auxiliary equipments - hose tray
		T2	1 Auxiliary equipment - hose drum
		T4	2 Auxiliary equipments - hose drum
		T2I	1 Auxiliary equipment - hose drum (inside)
		T4I	2 Auxiliary equipments - hose drum (inside)
SOSTZ	Separate-stabilizer	STUE01	Stabilizer ram -150mm
		STUE03	Stabilizer ram -100mm
STGA	Control - crane	FL	Floor control
		I	High stand platform
		H	Top seat
		NK	Emergency control - crane column
		NK2K	Emergency control - crane column, double circuit
		HF	Top seat - ground control

STRAN	Rope winch, strand	1	1 strand
		2	2 strand
		4	4 strand
STEIL	Monitoring the steep position	STEIL1	Monitoring the steep position
		STEIL2	Monitoring the steep position - Fly-Jib
STT	Stabilizer plates	Std	Standard
		100	Extension 100mm
		200	Extension 200mm
STZ	Stabilizer ram	STZO	Type without support
		STZS3	Stabilizer ram - rigid
		STZY3	Stabilizer ram - slewable
		STZY	Hydraulically tiltable stabilizer cylinder
		STZS3Y	Page-A= STZS3 B= STZY3
		STZYS3	Page-A= STZY3 B= STZS3
SWERK	Slewing system	1GETR	1-Slewing gear
		2GETR	2-Slewing gear
SWK	Max. rope winch capacity:	1,5	1,5t
		2,5	2,5t
		3,5	3,5t
		4,5	4,5t
TKKR	Crane tank	KT...	Crane tank ...l
TKLO	Auxiliary tank	TL...	Auxiliary tank ...l
TOT	Dead center	TOWI	Dead center over balance
		TOQU	Dead center over transverse spar
		SE	continuous
TSCH,TSTB	Control valve	M4-12	REXROTH M4-12
		PVG32	DANFOSS PVG32
		RS210	NORDHYDRAULIK RS210
		RS220	NORDHYDRAULIK RS220
		RSQ240	NORDHYDRAULIK RSQ240
		SDM081	WALVOIL SDM081
		VDM07	SALAMI VDM07
		DNCE50	DINOIL DNCE50
		DN46	DINOIL DN46
TSEIL	Transport position rope	AUSG	Unreeve the rope
		EING	Reeve the rope
V,PJV	Extensions	V...()	...Extensions by HYA()
		V...A	...Extensions by HYAA
		V...B	...Extensions by HYAB
		V...C	...Extensions by HYAC
		V...D	...Extensions by HYAD
		V...E	...Extensions by HYAE
		V...F	...Extensions by HYAF
		V...G	...Extensions by HYAG
		V...H	...Extensions by HYAH
VBH	Special overall height	180cm	Crane height 180cm
ZUBA	Attachment part	BRI-4	4x Bolts
		BRI-8	8x Bolts
		BRI-4B	4x Bolts coated
		BRI-8B	8x Bolts coated

Signs and symbols - abbreviation

MFA	Multifunctional adapter	KMFA-L	Multifunctional adapter - Crane light
		KMFA-H	Multifunctional adapter - Crane heavy
		JMFA-L	Multifunctional adapter - Fly Jib light
		JMFA-H	Multifunctional adapter - Fly Jib heavy
EINM	Pull-in part MFA	EINM..L	Pull-in part MFA light
		EINM..H	Pull-in part MFA heavy
MFAA	Multifunctional adapter + Adapter attachment	STRAN1-L	Adapter 1 strand light
		STRAN2-L	Adapter 2 strand light
		STRAN4-L	Adapter 4 strand light
		STRAN2-H	Adapter 2 strand heavy
		STRAN4-H	Adapter 4 strand heavy

Page	
0	PREFACE
0.01000	Signs and symbols - abbreviation
0.02000	Signs and symbols - abbreviation
0.03000	Signs and symbols - abbreviation
0.04000	Signs and symbols - abbreviation
010	SPECIFICATIONS
010.01100	Specifications
010.01110	Crane weight
010.01111	Additional weight
010.01120	Extensions
010.01130	Extensions PJ...
010.02100	Transport position NK2K SL4
010.02110	Transport position SKE
010.02120	Transport position SHE G PJ240
010.02130	Transport position SKE F PJ300L
010.02200	Transport position - boom system
010.03100	Working positions
010.03110	Working positions
010.04100	Support - outrigger beam R4X
010.04200	Support - stabilizer ram STZY
010.05100	Rotation diagram NK2K
010.06100	Rope winch assembly SKE 4.5t PJ300L
010.06110	Rope winch assembly MFA-L SKE 4.5t
010.06120	Rope winch assembly MFA-H SKE 4.5t
010.06200	Rope winch assembly SHE,SHEK 3.5t PJ240
010.06210	Rope winch assembly MFA-L SHE,SHEK 3.5t
010.06220	Rope winch assembly MFA-H SHE,SHEK 3.5t
010.06300	Multifunctional adapter MFA-L
010.06310	Multifunctional adapter MFA-H
020	LIFTING CAPACITY DIAGRAM
020.01100	Lifting capacity diagram PK 165.002 TEC C
020.02100	Lifting capacity diagram PK 165.002 TEC E
020.03100	Lifting capacity diagram PK 165.002 TEC F
020.04100	Lifting capacity diagram PK 165.002 TEC G
020.05100	Lifting capacity diagram PK 165.002 TEC H
020.06100	Lifting capacity diagram PK 165.002 TEC G PJ240 E DPS+
020.07100	Lifting capacity diagram PK 165.002 TEC G PJ240 E DPS-C
020.08100	Lifting capacity diagram PK 165.002 TEC F PJ300L F DPS-C
020.21000	Load capacity-Rope winch 3.5t
020.21100	Load capacity-Rope winch 4.5t

Specifications

Subject to change, production tolerances have to be taken into account.

Basic data

Classification:	HC1 HD5/S1 EN12999
Max. lifting moment:	124,8 mt (1224,3 kNm) [903,020 ft.lb]
Max. lifting capacity:	32000 kg [70,600 lb]
Max. hydraulic outreach:	21,0 m [68' 10"]
Slewing area:	continuous
Slewing torque:	2GETR 12,0 mt (117,8 kNm) [86,880 ft.lb]
Operating pressure:	38,5 MPa (385 bar) [5,584 psi]
Pump capacity:	2x 100 - 2x 120 l/min [26.4 - 31.7 US gpm]
Crane moment (dynamic):	146,8 mt (1440,0 kNm) [1,062,090 ft.lb]
Torsional moment (dynamic):	12,8 mt (126,0 kNm) [92,930 ft.lb]

Max. hydraulic outreach

HYA C	10,2 m [33' 6"]
HYA E	14,2 m [46' 8"]
HYA F	16,4 m [53' 9"]
HYA G	18,6 m [61' 1"]
HYA H	21,0 m [68' 10"]

Max. hydraulic outreach + Fly-Jib

HYA G + PJ240 E	31,3 m [102' 7"]
HYA F + PJ300L F	36,1 m [118' 4"]

Subject to change, production tolerances have to be taken into account.

Crane weight		NK2K R4X STZY OLK07 KT500	
	HYA C		11610 kg [25,600 lb]
	HYA E		12340 kg [27,200 lb]
	HYA F		12660 kg [27,910 lb]
	HYA G		12960 kg [28,570 lb]
	HYA H		13200 kg [29,100 lb]

Crane weight + Fly-Jib		NK2K 4 R4X STZY OLK07 KT500		
		PJ240 E	PJ240 E J04	
	HYA G	14720 kg [32,450 lb]	14810 kg [32,650 lb]	
		PJ300L F	PJ300L F J04	PJ300L FJV1
	HYA F	15210 kg [33,530 lb]	15320 kg [33,770 lb]	15260 kg [33,640 lb]

All weights are without accessories, auxiliary equipment and oil.
Depicted optional equipment not in all countries available.

Additional weight

Hose-equipment			
	HYA C		4 110 kg [240 lb]
	HYA E		4 150 kg [330 lb]
	HYA F		4 170 kg [370 lb]
	HYA G		4 190 kg [420 lb]
	HYA H		4 210 kg [460 lb]

Additional weight

Subject to change, production tolerances have to be taken into account.

Rope winch with rope

SHE 3.5t	SHEK 3.5t	SKE 4.5t
230 kg [510 lb]	275 kg [610 lb]	280 kg [620 lb]

Accessories - Rope winch

(Pull-in part - MFA,
Inside pulley,
Pulley head,
Load attachment)

MFA-L 3.5t	1STRAN 125 kg [280 lb]	2STRAN 155 kg [340 lb]	
MFA-H 3.5t	1STRAN 150 kg [330 lb]	2STRAN 185 kg [410 lb]	4STRAN 220 kg [490 lb]
MFA-L 4.5t	1STRAN 175 kg [390 lb]	2STRAN 245 kg [540 lb]	
MFA-H 4.5t	1STRAN 200 kg [440 lb]	2STRAN 285 kg [630 lb]	4STRAN 285 kg [630 lb]

Rope winch + Fly-Jib

HYA G + PJ240 E				
	SHE 3.5t	SHEK 3.5t	1STRAN	2STRAN
	230 kg [510 lb]	305 kg [670 lb]	130 kg [290 lb]	130 kg [290 lb]
HYA F + PJ300 F				
	SKE 4.5t		1STRAN	2STRAN
	280 kg [620 lb]		125 kg [280 lb]	145 kg [320 lb]

Subject to change, production tolerances have to be taken into account.

Max. outreach

	V1
HYA H	23,3 m [77 ft]

Weight

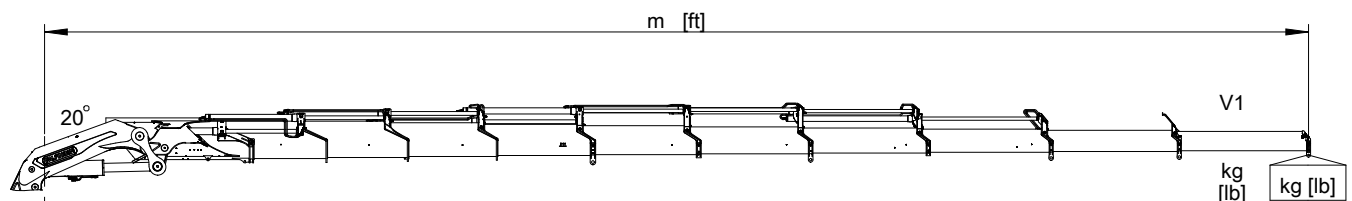
	V1
HYA H	120 kg [260 lb]

Load capacity at 20° main boom position

			V1
HYA H			23,2 m [76 ft] 4250 kg [9,400 lb]

Maximum allowed capacity of manual extension

			V1
HYA H	KMT141A-A	max. 4300 kg [max. 9,500 lb]	



The lifting capacity of the crane is reduced by the own weight of the manual extension.

Extensions PJ...

Subject to change, production tolerances have to be taken into account.

Max. outreach

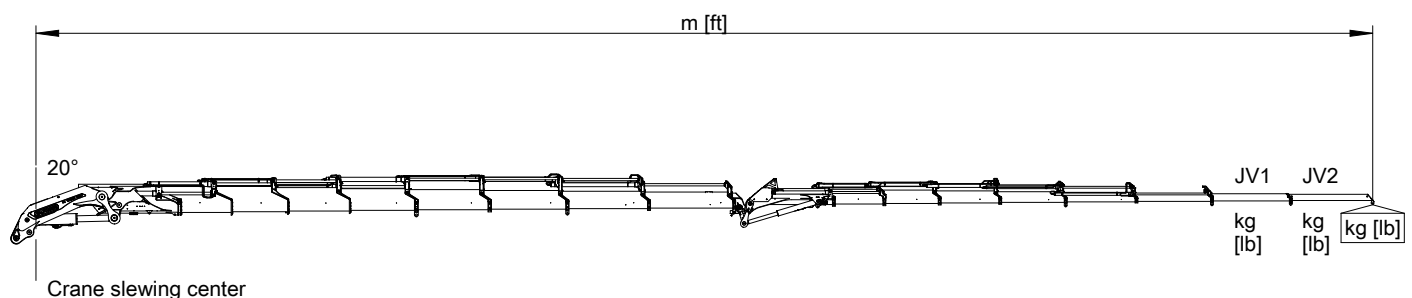
	JV1	JV2
	33,3 m [109 ft]	35.5 m [117 ft]
HYA G + PJ240 E		
	38,7 m [127 ft]	-
HYA F + PJ300L F		

Load capacity at 20° main boom position

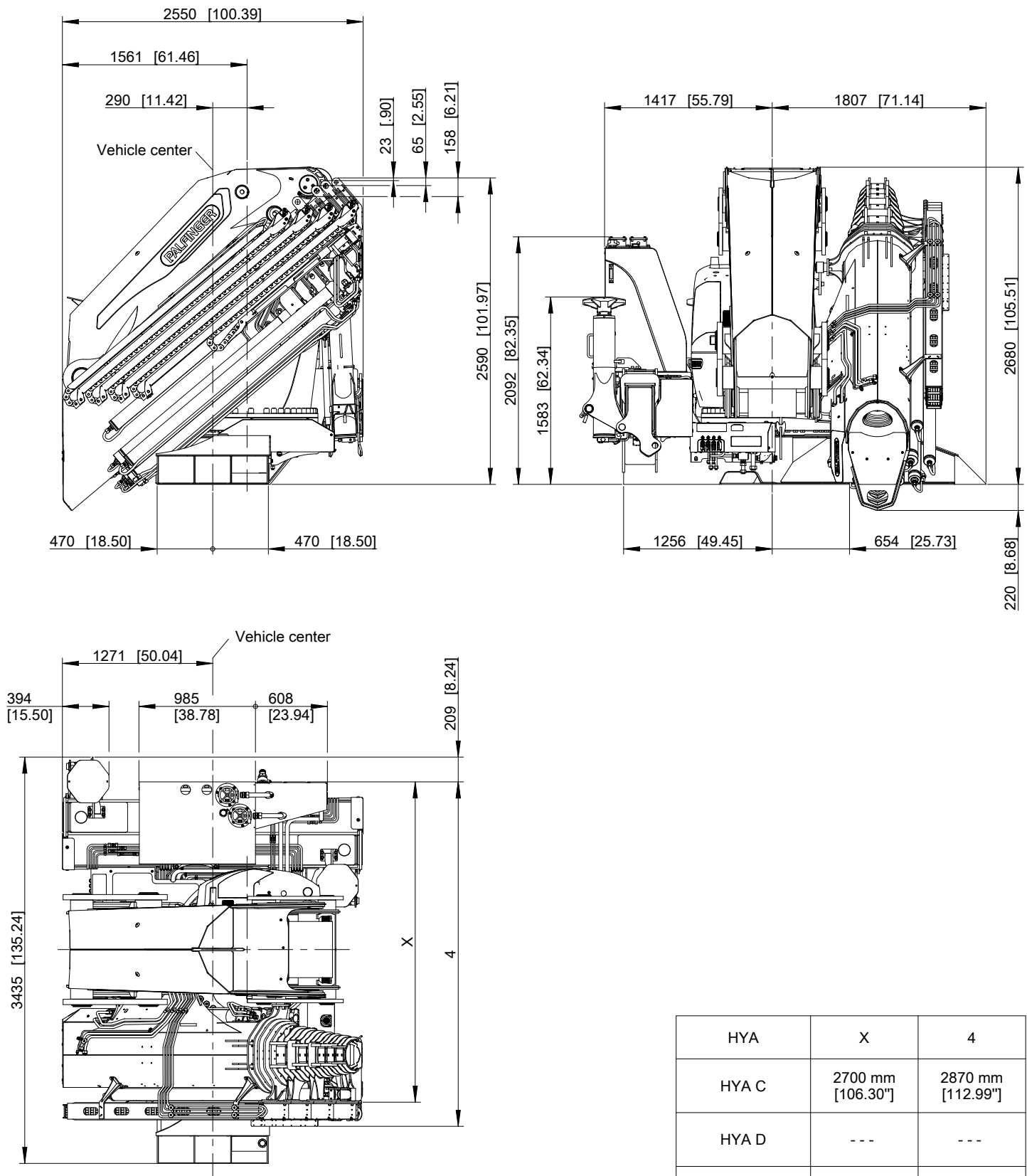
	JV1	JV2
	33,2 m [109 ft] 1150 kg [2,540 lb]	35,4 m [116 ft] 820 kg [1,820 lb]
HYA G + PJ240 E		
	38,5 m [126 ft] 650 kg [1,440 lb]	-
HYA F + PJ300L F		

Maximum allowed capacity of manual extension

	JV1	JV2
	KMT142A-A max. 1150 kg [max. 2,540 lb]	KMT149A-A max. 820 kg [max. 1,820 lb]
HYA G + PJ240 E		
	KMT120A-A max. 900 kg [max. 1,980 lb]	-
HYA F + PJ300L F		



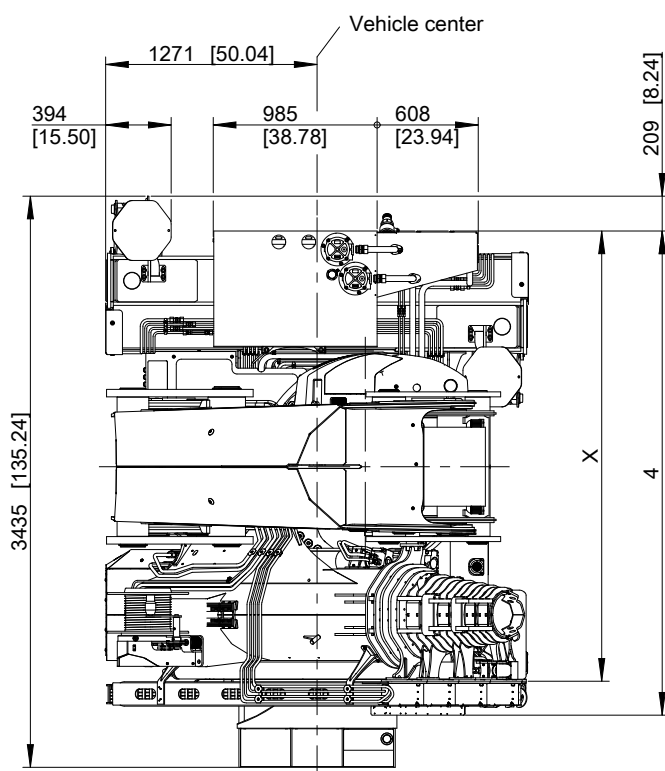
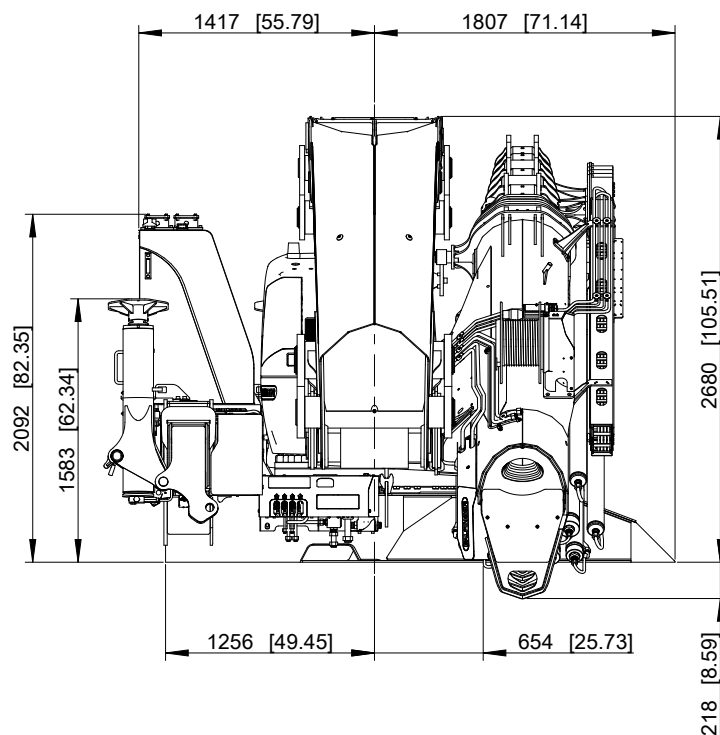
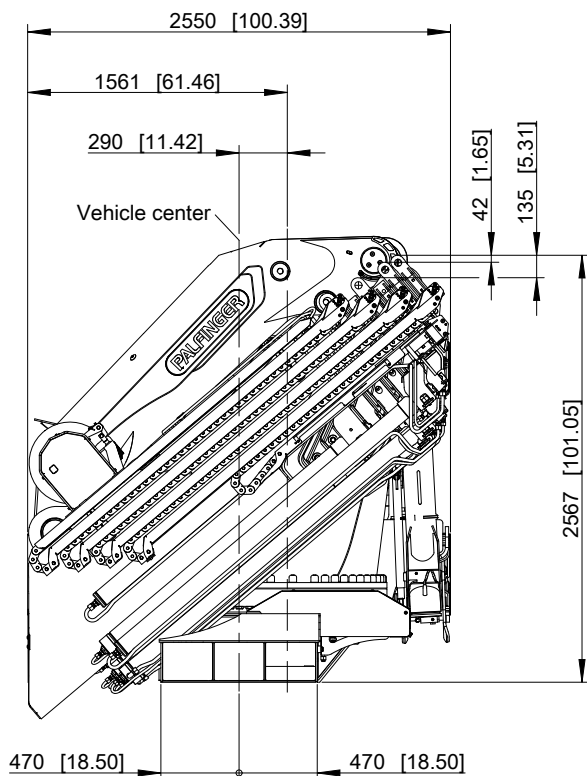
Subject to change, production tolerances have to be taken into account.



HYA	X	4
HYA C	2700 mm [106.30"]	2870 mm [112.99"]
HYA D	---	---
HYA E - HYA F	2720 mm [107.09"]	2870 mm [112.99"]
HYA G	2850 mm [112.20"]	2870 mm [112.99"]
HYA H	2850 mm [112.20"]	2910 mm [114.57"]

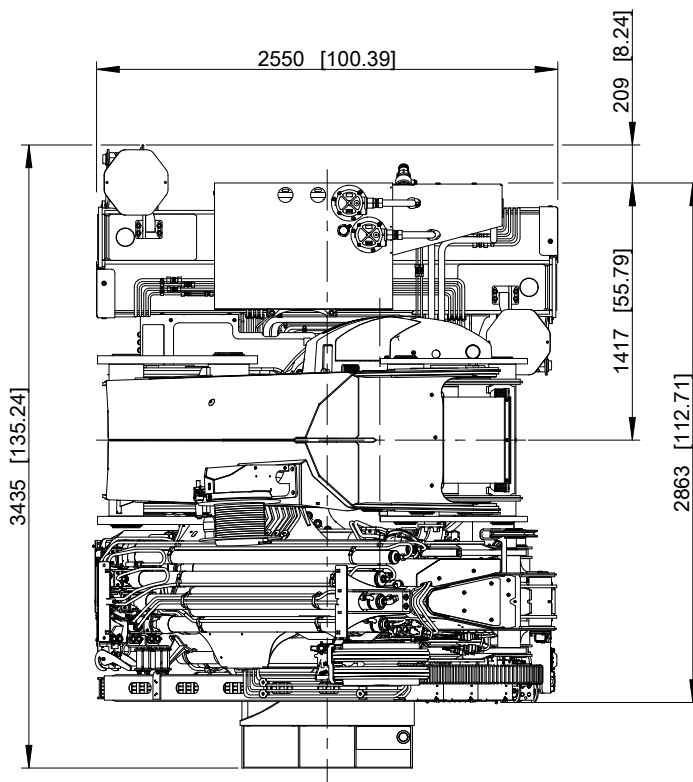
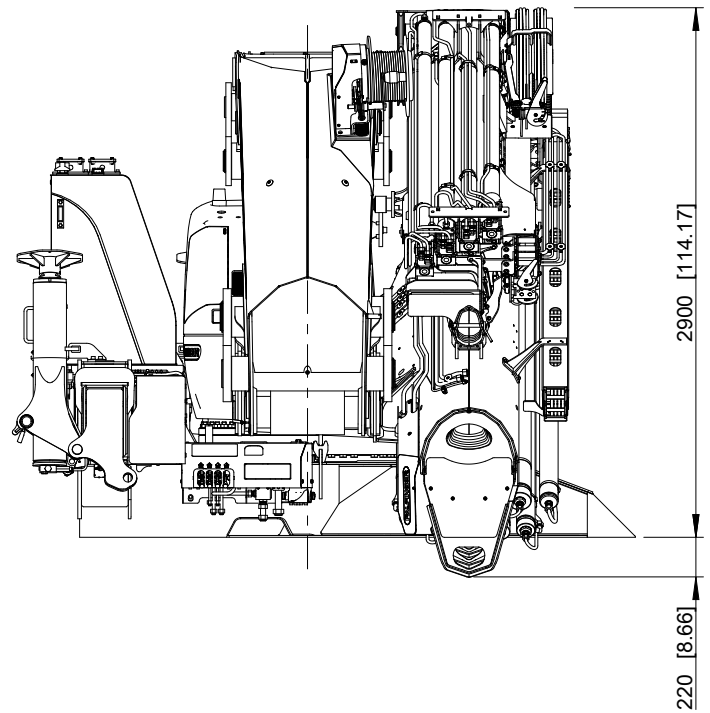
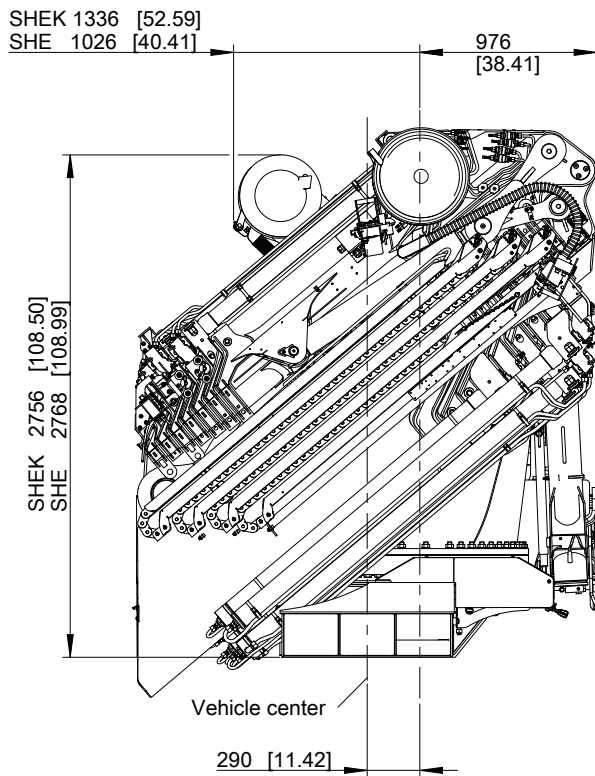
Transport position SKE

Subject to change, production tolerances have to be taken into account.



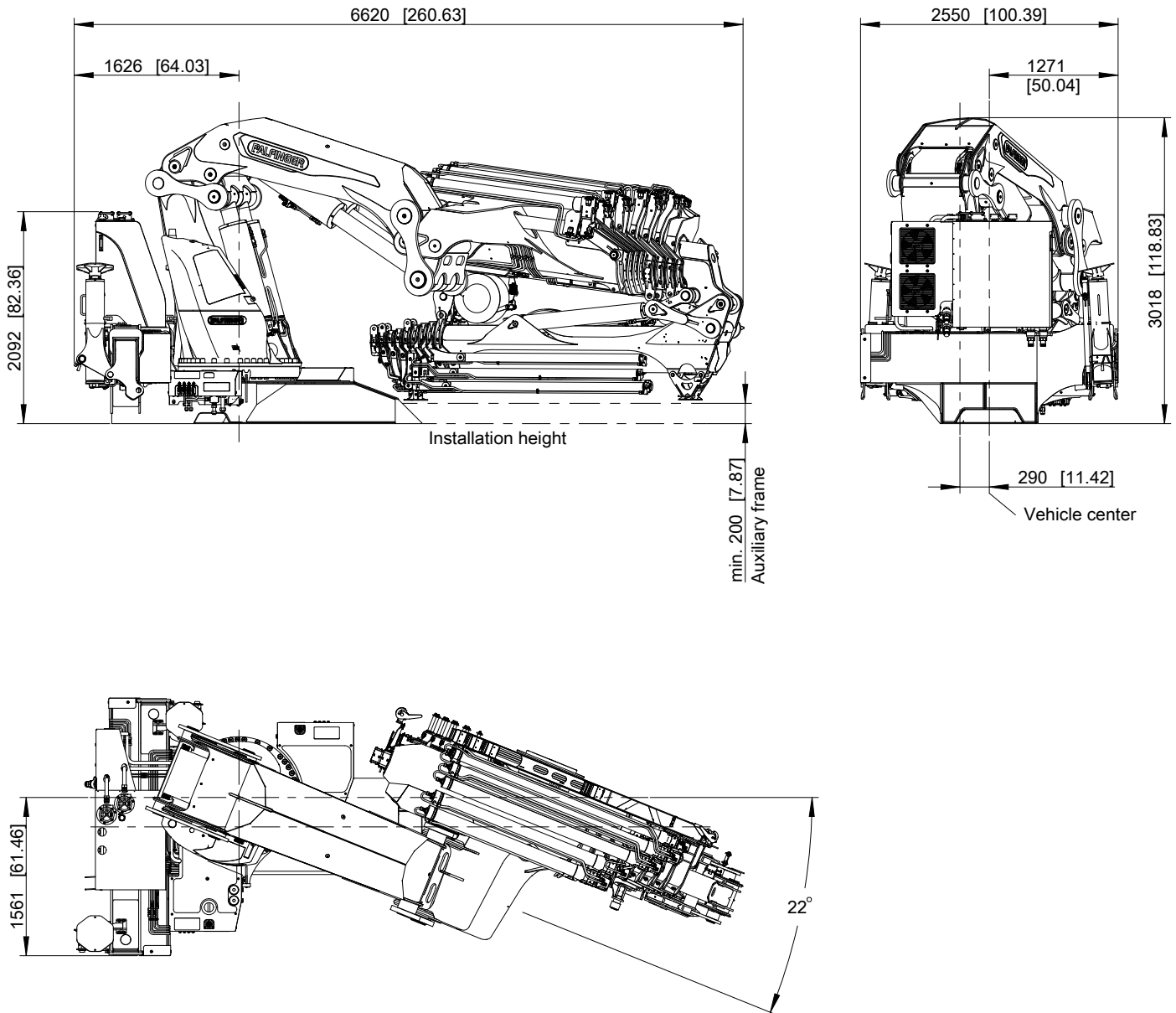
HYA	X	4
HYA C	2700 mm [106.30"]	2870 mm [112.99"]
HYA D	---	---
HYA E - HYA F	2720 mm [107.09"]	2870 mm [112.99"]
HYA G	2850 mm [112.20"]	2870 mm [112.99"]
HYA H	2850 mm [112.20"]	2910 mm [114.57"]

Subject to change, production tolerances have to be taken into account.

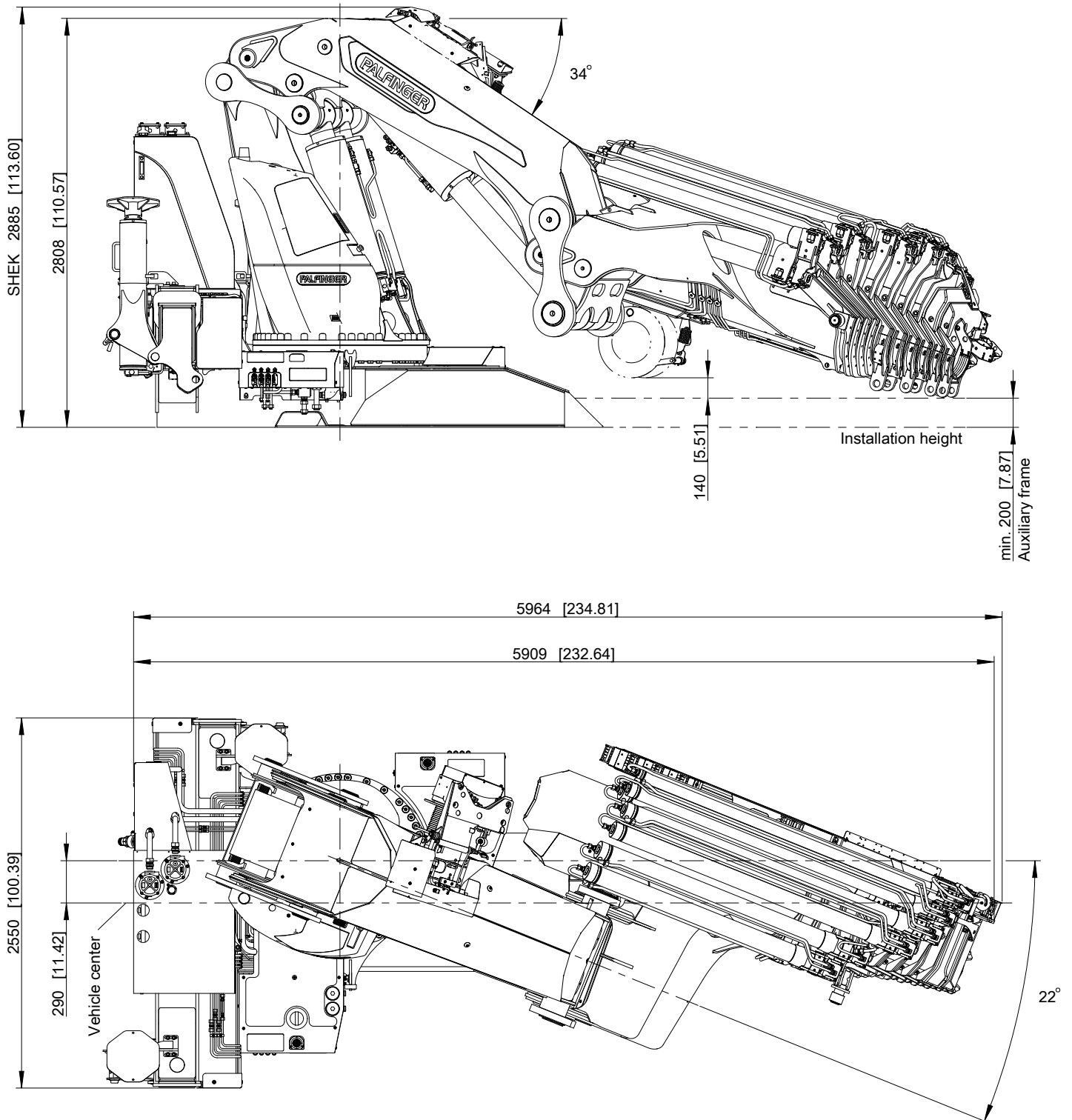


Transport position SKE F PJ300L

Subject to change, production tolerances have to be taken into account.

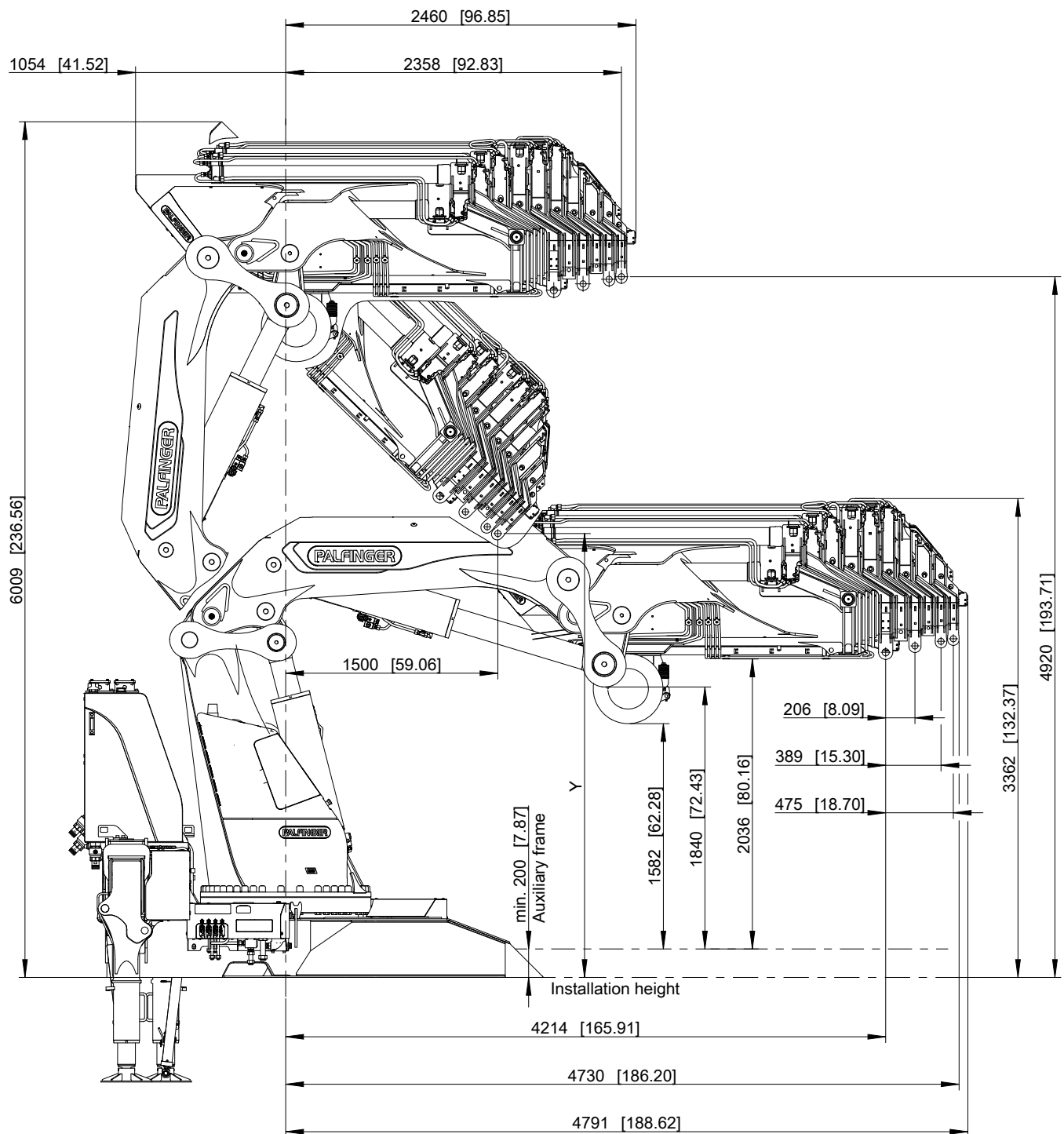


Subject to change, production tolerances have to be taken into account.



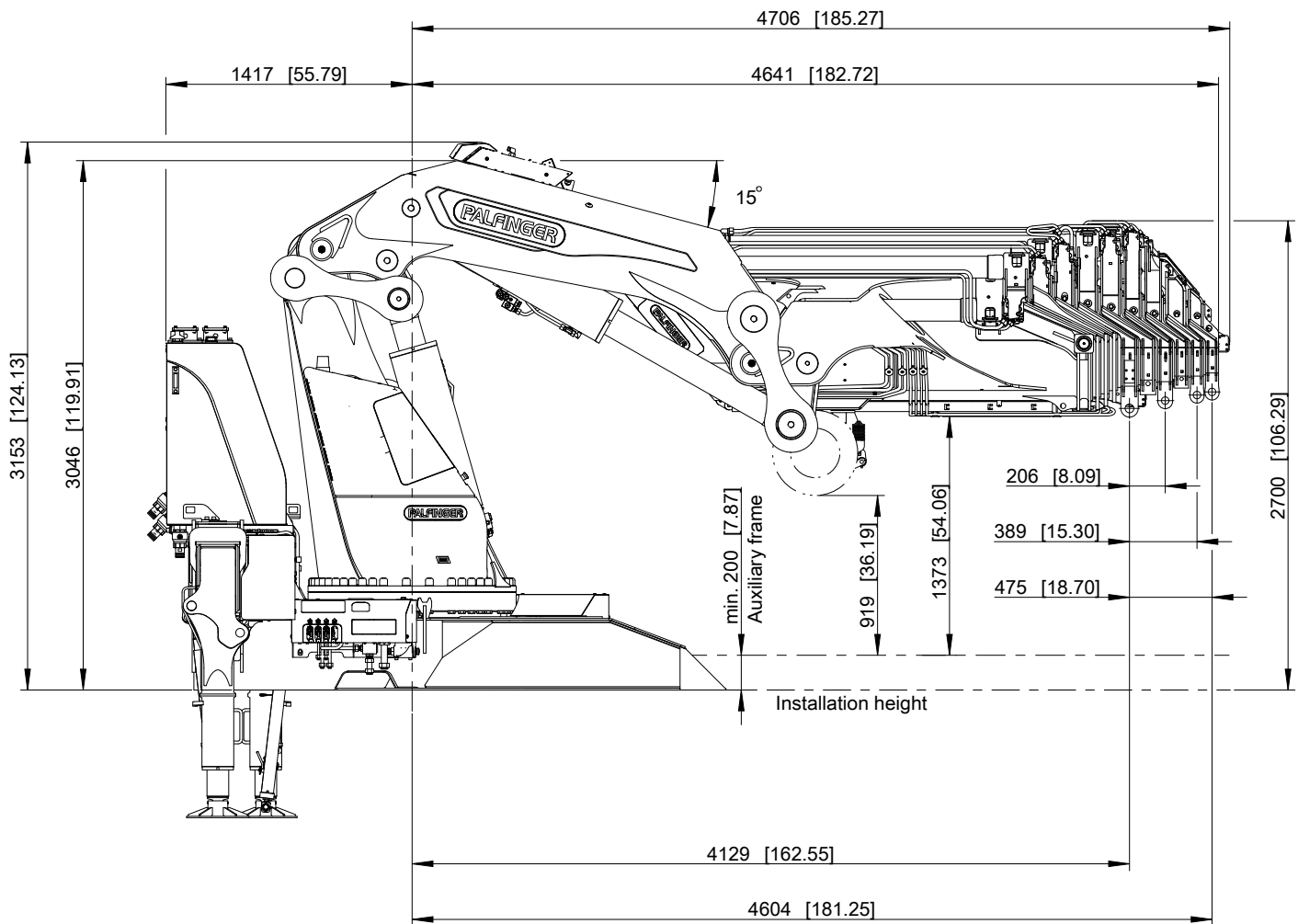
Working positions

Subject to change, production tolerances have to be taken into account.



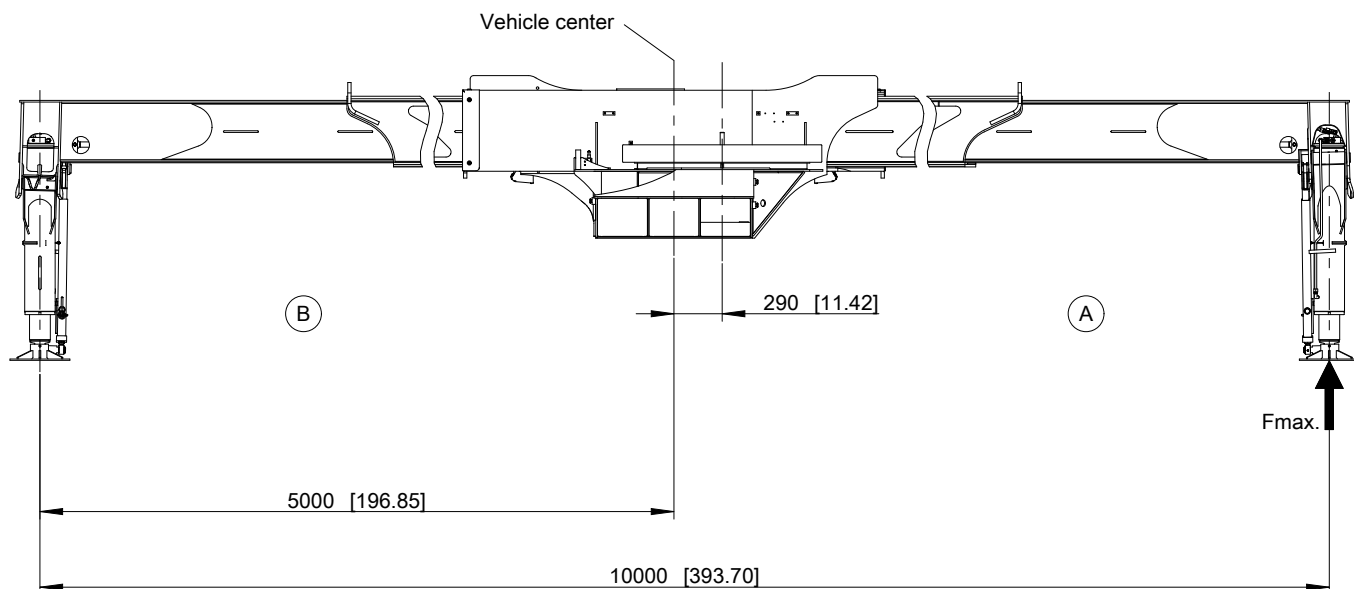
HYA	HYA C	HYA E	HYA F	HYA G	HYA H
Y	3834 mm [150.94"]	3505 mm [137.99"]	3366 mm [132.52"]	3245 mm [127.76"]	3127 mm [123.11"]

Subject to change, production tolerances have to be taken into account.



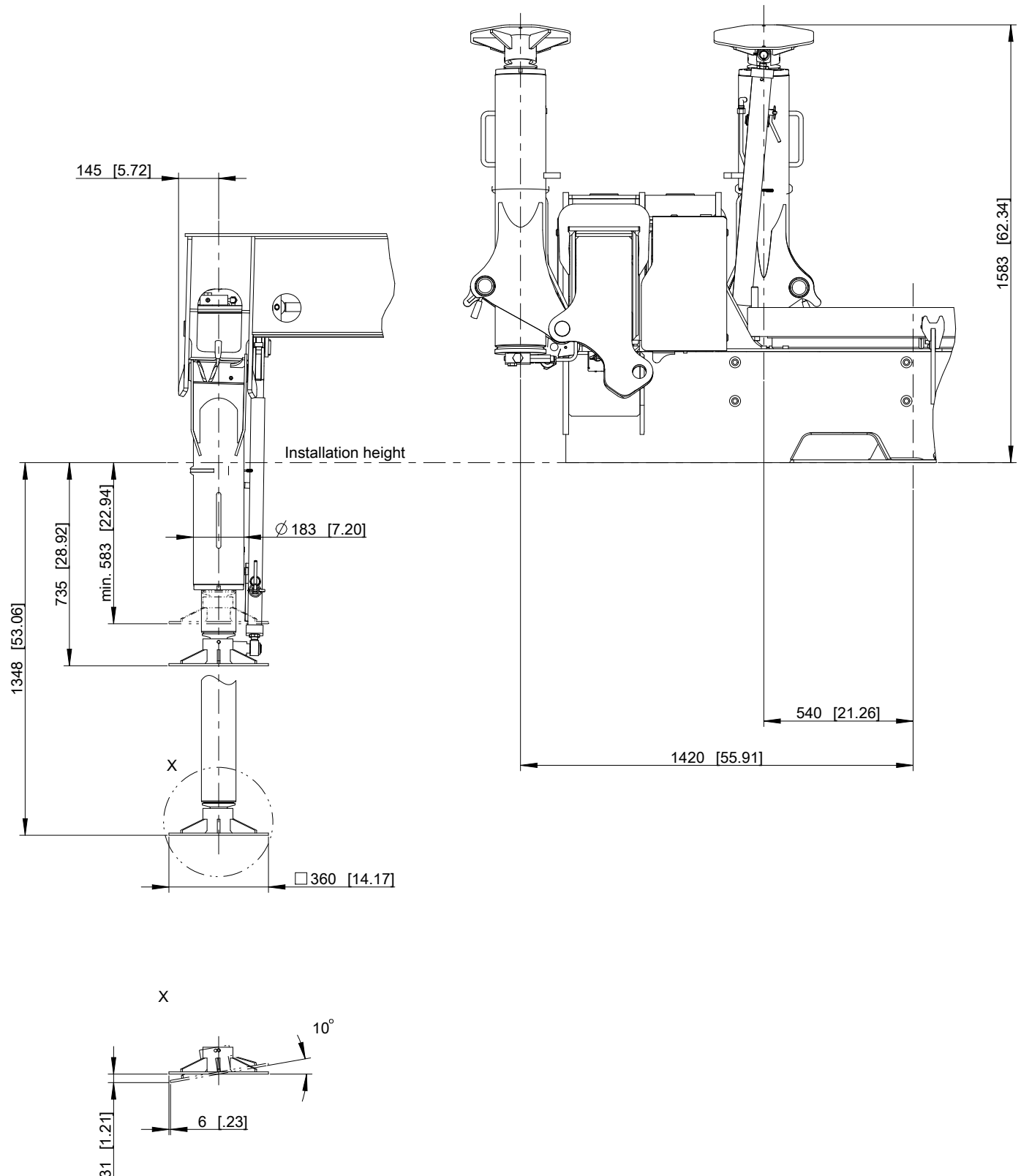
Support - outrigger beam R4X

Subject to change, production tolerances have to be taken into account.



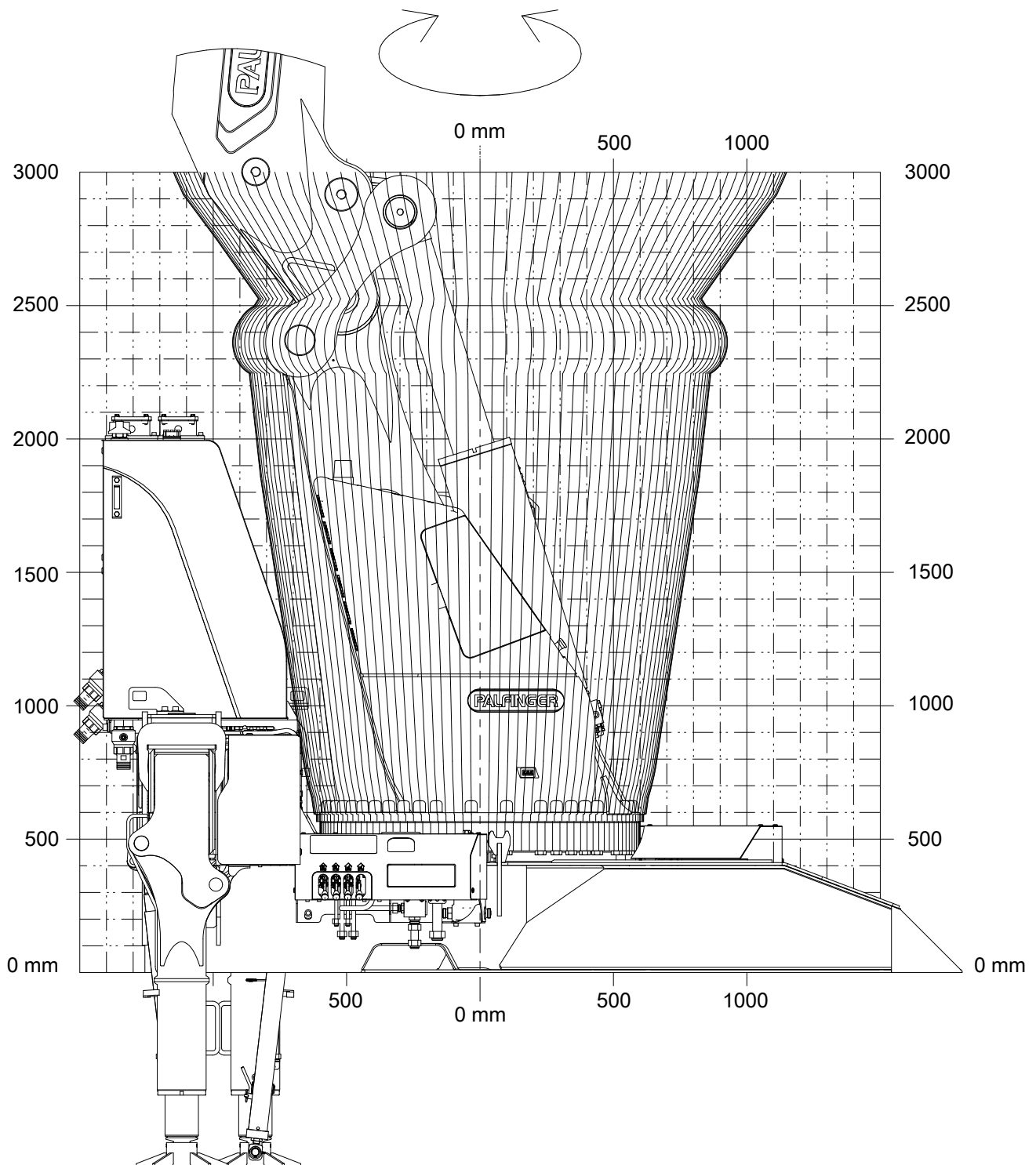
Stabilizer force	
Fmax. A	Fmax. B
307,0 kN [69,016 lb]	289,0 kN [64,970 lb]

Subject to change, production tolerances have to be taken into account.

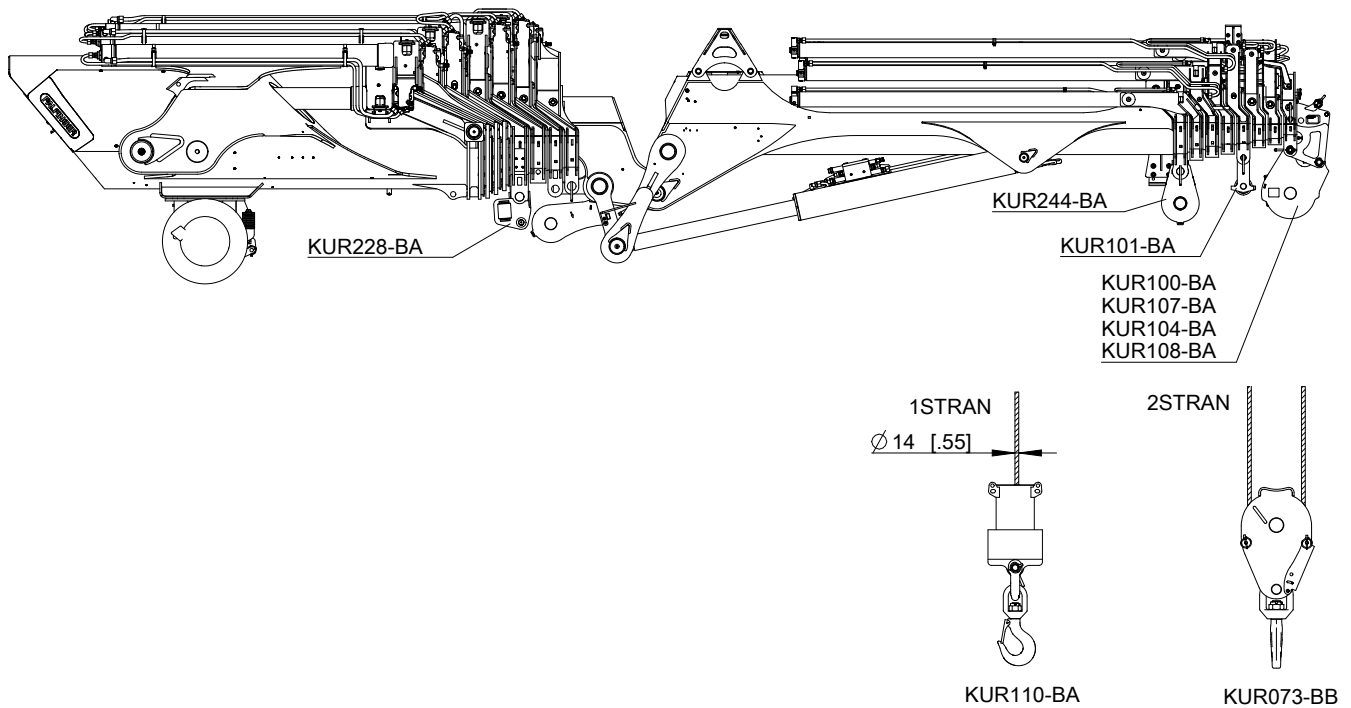


Rotation diagram NK2K

Subject to change, production tolerances have to be taken into account.



Subject to change, production tolerances have to be taken into account.



Max. load capacity

	KUR100-BA	1STRAN 4500 kg [9,920 lb]	KUR104-BA	2STRAN 9000 kg [19,840 lb]
Pulley head	KUR107-BA SRC	1STRAN 4500 kg [9,920 lb]	KUR108-BA SRC	2STRAN 9000 kg [19,840 lb]
Hook block	KUR110-BA	1STRAN 4500 kg [9,920 lb]	KUR073-BB	2STRAN 9000 kg [19,840 lb]

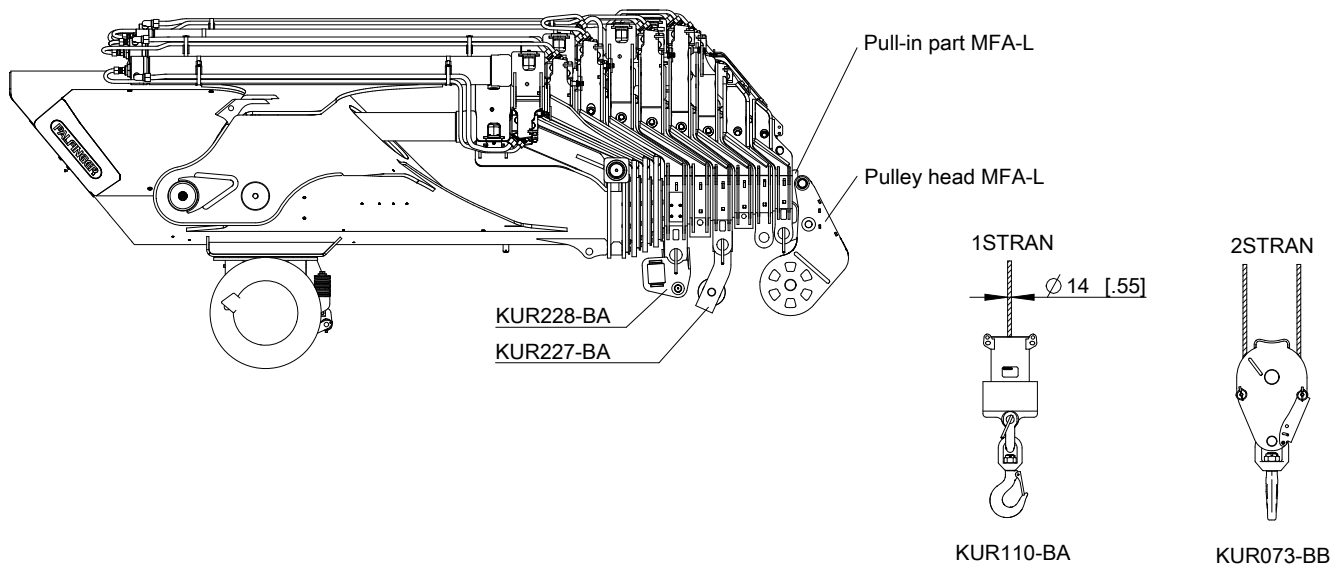
Mounting - overview Boom extensions

HYA	1	2	3	4	5	6	7
HYA F	-	-	-	KUR228-BA	-	-	-

PJ300L	1	2	3	4	5	6	7
PJHY F	-	-	-	KUR101-BA	-	-	KUR100-BA KUR107-BA KUR104-BA KUR108-BA

Rope winch assembly MFA-L SKE 4.5t

Subject to change, production tolerances have to be taken into account.



Max. load capacity

Pulley head MFA-L		KUR224-BA		2STRAN 9000 kg [19,840 lb]
Hook block	KUR110-BA	1STRAN 4500 kg [9,920 lb]	KUR073-BB	2STRAN 9000 kg [19,840 lb]

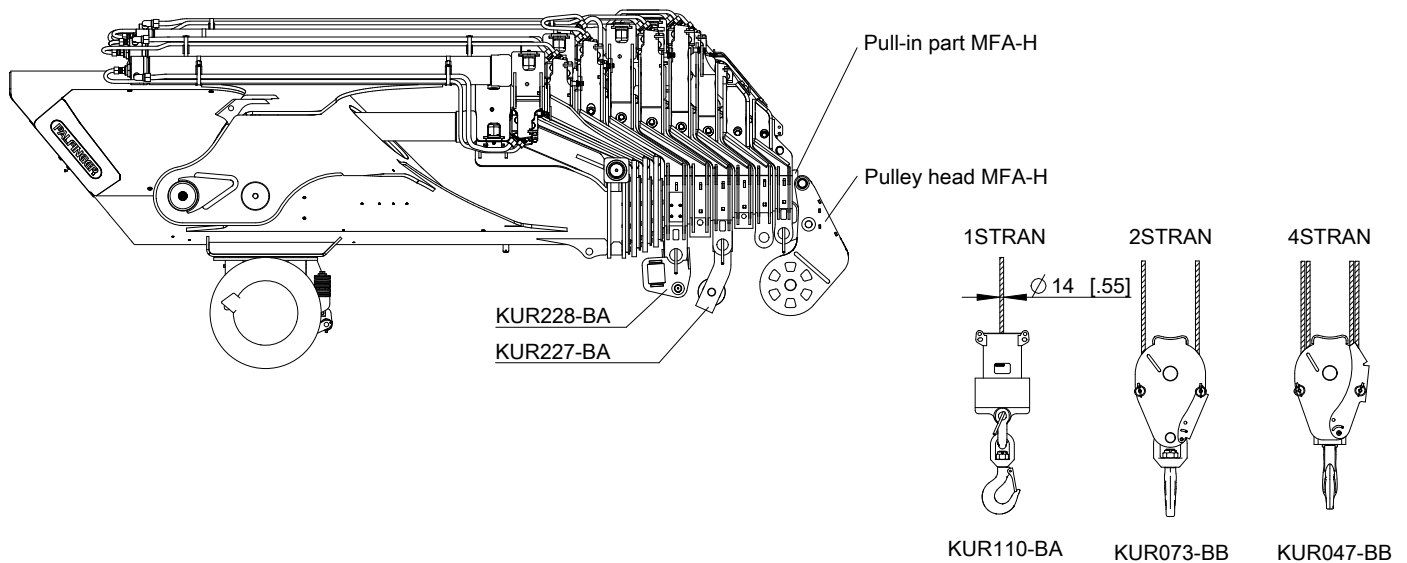
Pull-in part MFA-L

HYA E	KLG031-BA (EINM11L)			
HYA F	KLG030-BA (EINM10L)			
HYA G	KLG029-BA (EINM09L)			
HYA H	KLG021-BA (EINM08L)			

Mounting - overview
Boom extensions

HYA	1	2	3	4	5	6	7	8	9
HYA E	-	-	-	KUR228-BA	-	KLG031-BA KUR224-BA		KLG029-BA KUR224-BA	KLG021-BA KUR224-BA
HYA F	-	-	-	KUR228-BA	-	-	KLG030-BA KUR224-BA		
HYA G	-	-	-	KUR228-BA	-	KUR227-BA	-		
HYA H	-	-	-	KUR228-BA	-	KUR227-BA	-	-	KLG021-BA KUR224-BA

Subject to change, production tolerances have to be taken into account.



Max. load capacity

Pulley head MFA-H		KUR226-BA		4STRAN 18000 kg [39,680 lb]
Hook block	KUR110-BA	1STRAN 4500 kg [9,920 lb]	KUR073-BB	2STRAN 9000 kg [19,840 lb]
				4STRAN 18000 kg [39,680 lb]
			KUR047-BB	

Pull-in part MFA-H

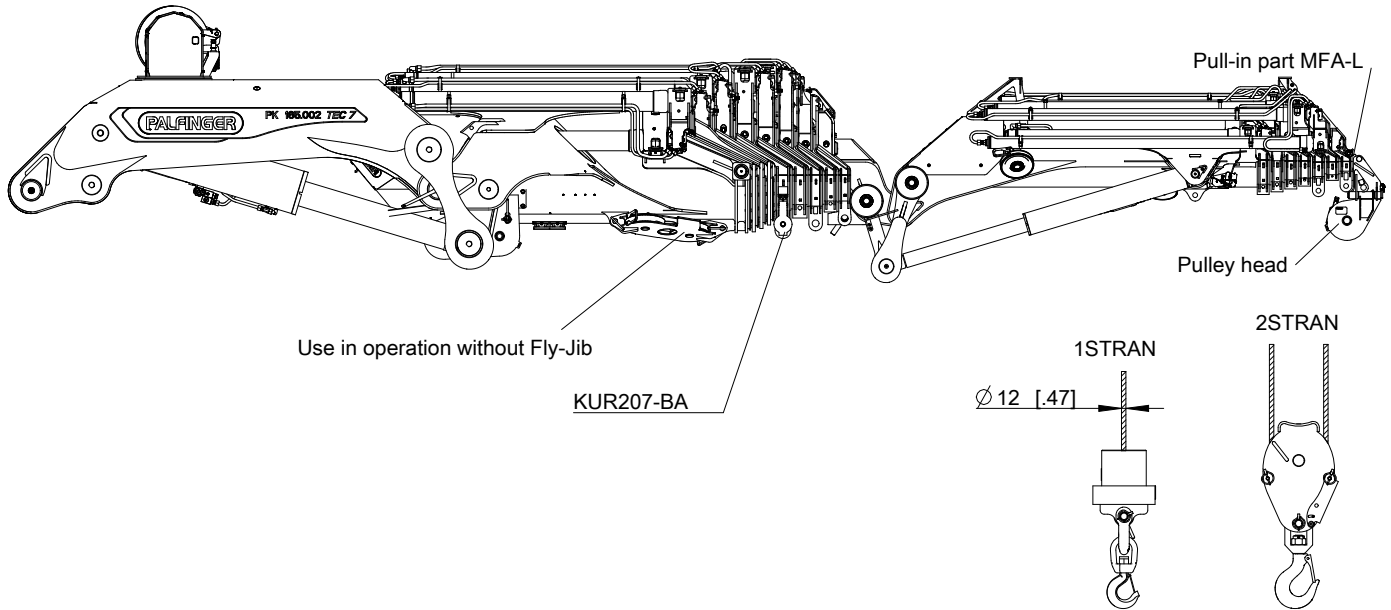
HYA E	KLG043-BA (EINM11H)
HYA F	KLG042-BA (EINM10H)
HYA G	KLG041-BA (EINM09H)
HYA H	KLG040-BA (EINM08H)

Mounting - overview Boom extensions

HYA	1	2	3	4	5	6	7	8	9
HYA E	-	-	-	KUR228-BA	-	KLG043-BA KUR226-BA			
HYA F	-	-	-	KUR228-BA	-	-	KLG042-BA KUR226-BA		
HYA G	-	-	-	KUR228-BA	-	KUR227-BA	-	KLG041-BA KUR226-BA	
HYA H	-	-	-	KUR228-BA	-	KUR227-BA	-	-	KLG040-BA KUR226-BA

Rope winch assembly SHE,SHEK 3.5t PJ240

Subject to change, production tolerances have to be taken into account.



Max. load capacity

Pulley head	KUR231-BA	1STRAN 3500 kg [7,720 lb]	KUR232-BA SRC	1STRAN 3500 kg [7,720 lb]
Pulley head MFA-L	KUR233-BB	STRAN2-L 7000 kg [15,430 lb]	KUR233-BA SRC	STRAN2-L 7000 kg [15,430 lb]
Hook block	KUR064-BA	1STRAN 3500 kg [7,720 lb]	KUR043-BB	2STRAN 7000 kg [15,430 lb]

Pull-in part MFA-L

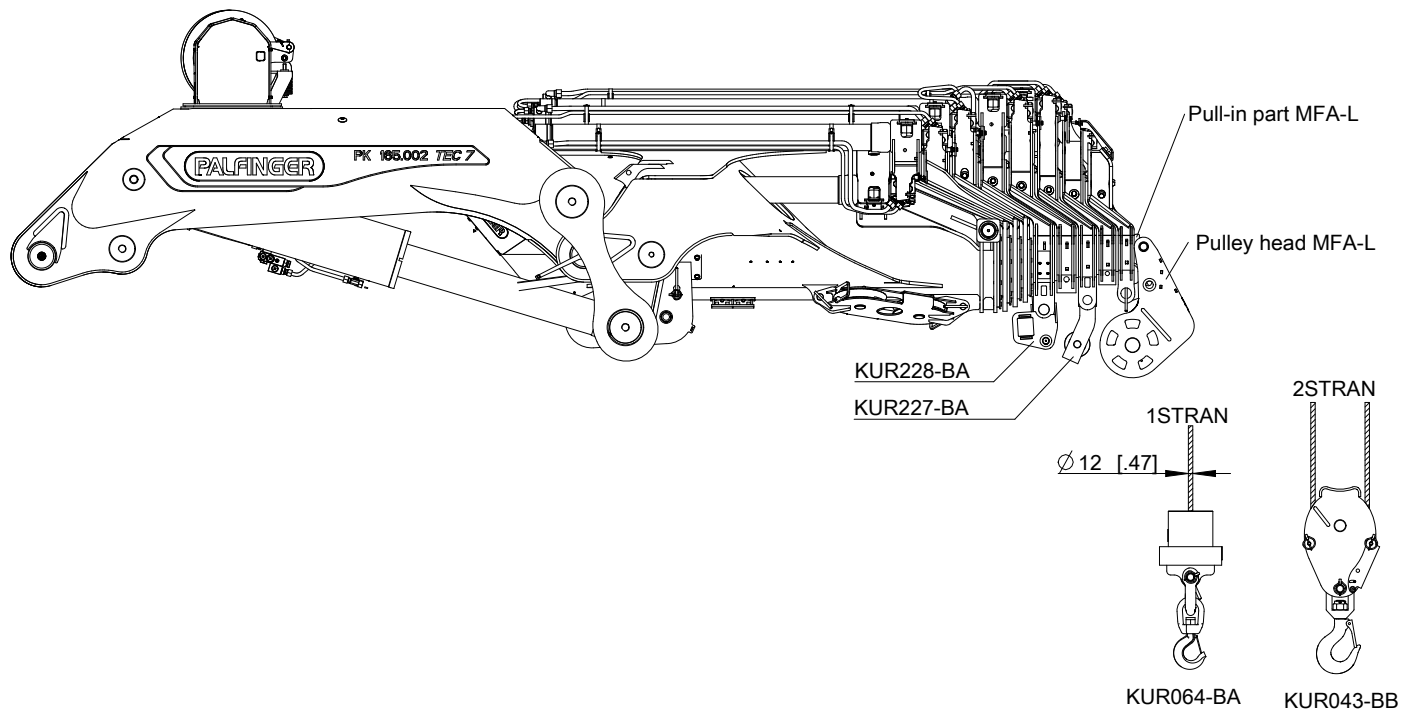
PJHY E	KL054-BA (EINM03L)
--------	--------------------

Mounting - overview
Boom extensions

HYA	1	2	3	4	5	6	7	8
HYA G	-	-	-	KUR207-BA	-	-	-	-

PJ240	1	2	3	4	5	6
PJHY E	-	-	-	-	-	KL054-BA KUR231-BA KUR232-BA KUR233-BA

Subject to change, production tolerances have to be taken into account.



Max. load capacity

Pulley head MFA-L		KUR233-BA SRC	1STRAN 2STRAN 7000 kg [15,430 lb]	KUR233-BB	1STRAN 2STRAN 7000 kg [15,430 lb]
Hook block	KUR064-BA	1STRAN 3500 kg [7,720 lb]		KUR043-BB	2STRAN 7000 kg [15,430 lb]

Pull-in part MFA-L

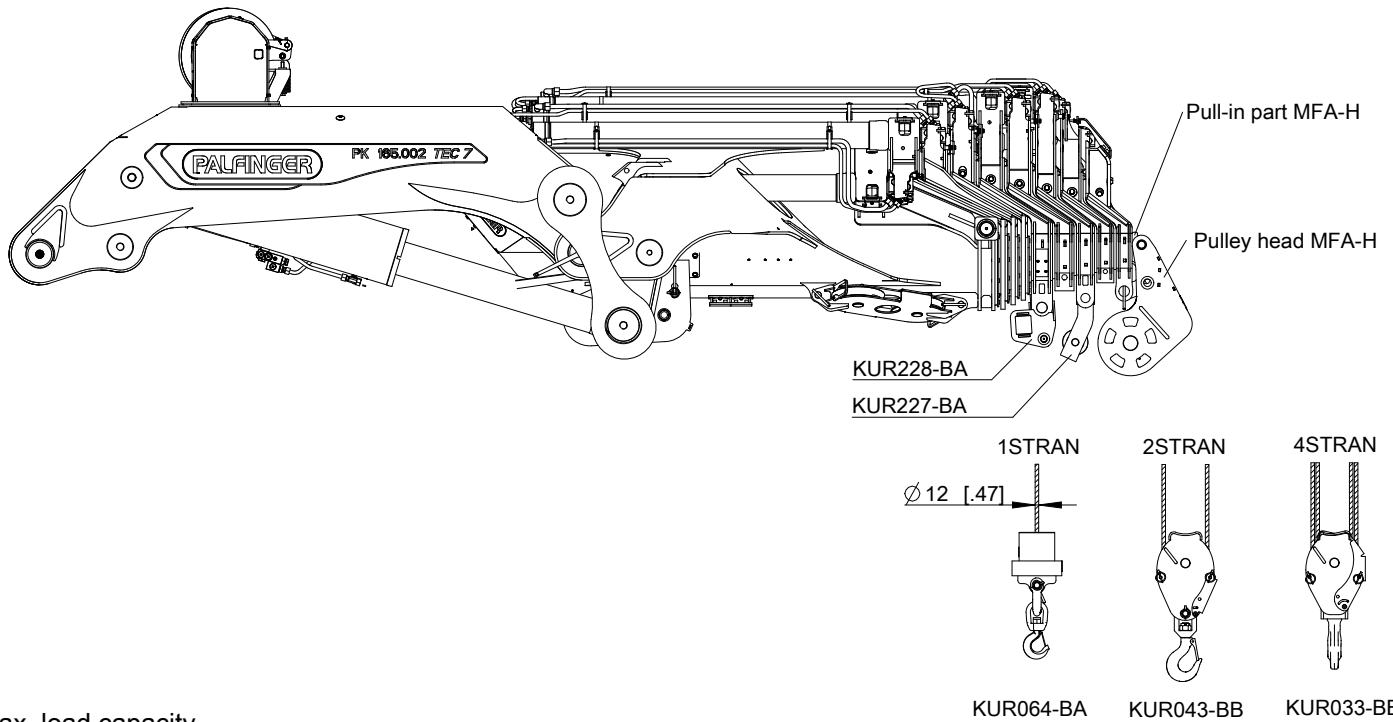
HYA E	KLG031-BA (EINM11L)
HYA F	KLG030-BA (EINM10L)
HYA G	KLG029-BA (EINM09L)

**Mounting - overview
Boom extensions**

HYA	1	2	3	4	5	6	7	8
HYA E	-	-	-	KUR228-BA	-	KLG031-BA KUR233-BA KUR233-BB		
HYA F	-	-	-	KUR228-BA	-	-	KLG030-BA KUR233-BA KUR233-BB	
HYA G	-	-	-	KUR228-BA	-	KUR227-BA	-	KLG029-BA KUR233-BA KUR233-BB

Rope winch assembly MFA-H SHE,SHEK 3.5t

Subject to change, production tolerances have to be taken into account.



Max. load capacity

		1STRAN 2STRAN 7000 kg [15,430 lb]	4STRAN 14000 kg [30,860 lb]
Pulley head MFA-H	KUR245-BA	KUR225-BA	
Hook block	KUR064-BA	KUR043-BB	KUR033-BB
		1STRAN 3500 kg [7,720 lb]	2STRAN 7000 kg [15,430 lb]

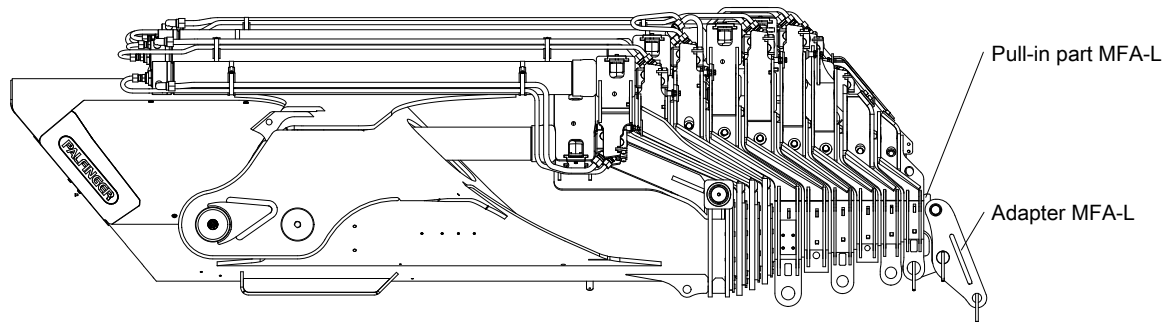
Pull-in part MFA-H

HYA E	KLK043-BA (EINM11H)
HYA F	KLK042-BA (EINM10H)
HYA G	KLK041-BA (EINM09H)

Mounting - overview
Boom extensions

HYA	1	2	3	4	5	6	7	8
HYA E	-	-	-	KUR228-BA	-	KLK043-BA KUR225-BA KUR245-BA		
HYA F	-	-	-	KUR228-BA	-	-	KLK042-BA KUR225-BA KUR245-BA	
HYA G	-	-	-	KUR228-BA	-	KUR227-BA	-	KLK041-BA KUR225-BA KUR245-BA

Subject to change, production tolerances have to be taken into account.



Max. load capacity

Adapter MFA-L	KLK051-BA	11500 kg [25,350 lb]
---------------	-----------	-------------------------

Pull-in part MFA-L

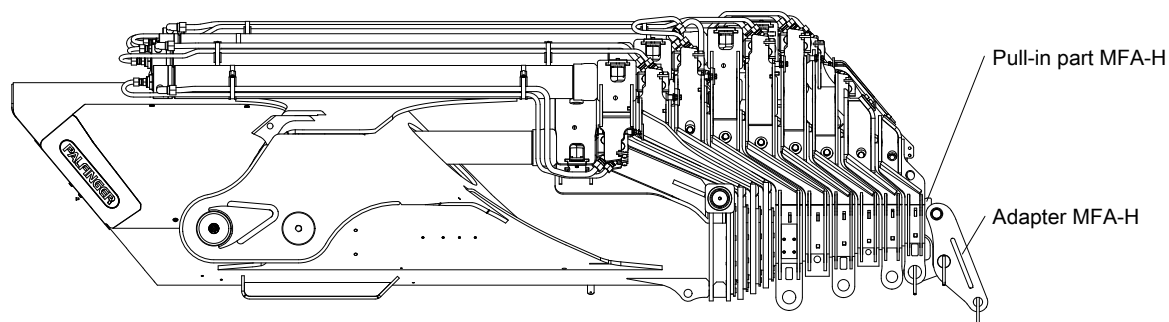
HYA E	KLK031-BA (EINM11L)
HYA F	KLK030-BA (EINM10L)
HYA G	KLK029-BA (EINM09L)
HYA H	KLK021-BA (EINM08L)

Mounting - overview Boom extensions

HYA	1	2	3	4	5	6	7	8	9
HYA E	-	-	-	-	-	KLK031-BA KLK051-BA		KLK029-BA KLK051-BA	KLK021-BA KLK051-BA
HYA F	-	-	-	-	-	-	KLK030-BA KLK051-BA		
HYA G	-	-	-	-	-	-	-		
HYA H	-	-	-	-	-	-	-	-	

Multifunctional adapter MFA-H

Subject to change, production tolerances have to be taken into account.



Max. load capacity

Adapter MFA-H	KLK052-BA	18000 kg [39,680 lb]
---------------	-----------	-------------------------

Pull-in part MFA-H

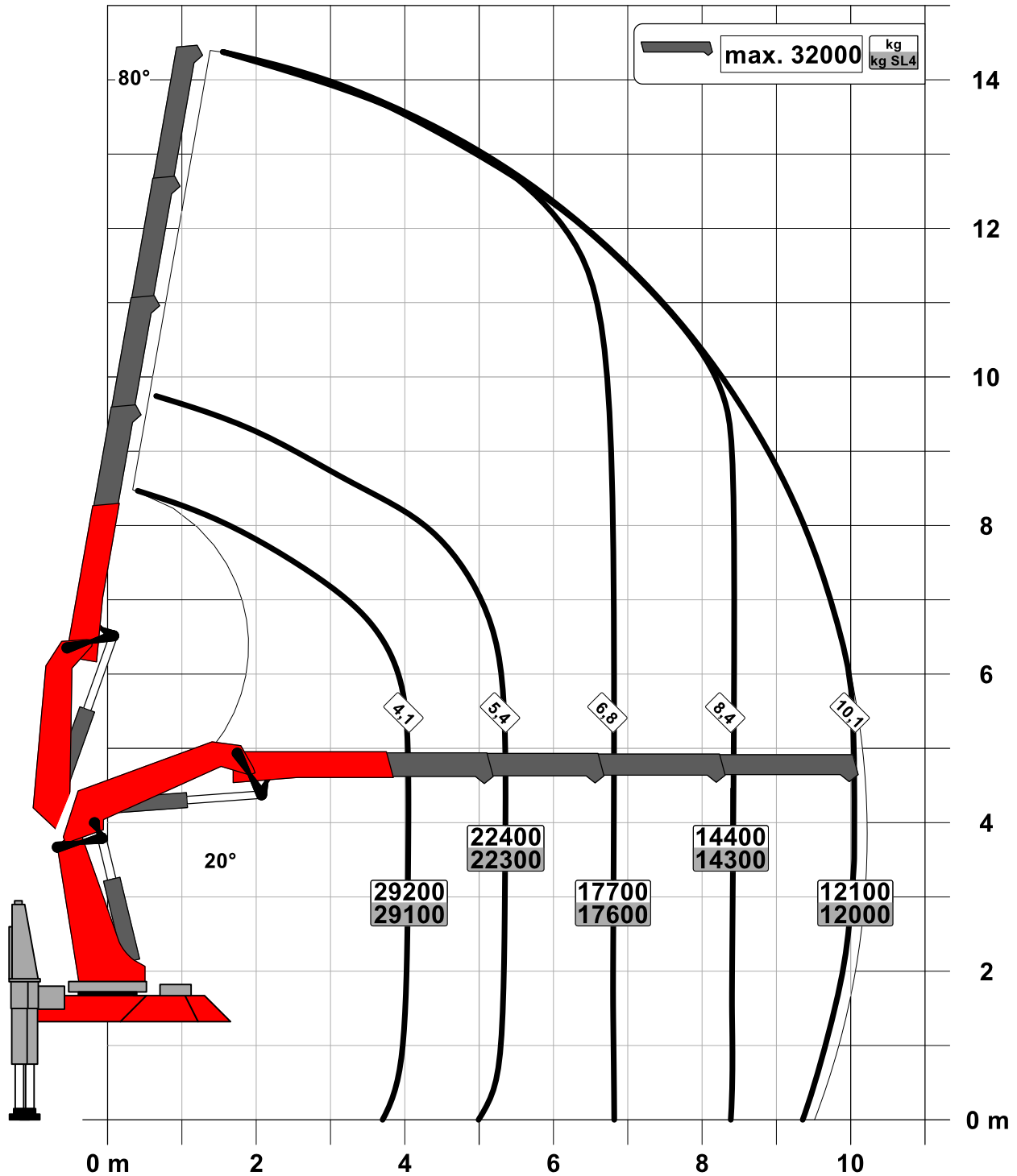
HYA E	KLK043-BA (EINM11H)
HYA F	KLK042-BA (EINM10H)
HYA G	KLK041-BA (EINM09H)
HYA H	KLK040-BA (EINM08H)

Mounting - overview Boom extensions

HYA	1	2	3	4	5	6	7	8	9
HYA E	-	-	-	-	-	KLK043-BA KLK052-BA			
HYA F	-	-	-	-	-	-	KLK042-BA KLK052-BA		
HYA G	-	-	-	-	-	-	-	KLK041-BA KLK052-BA	
HYA H	-	-	-	-	-	-	-	-	KLK040-BA KLK052-BA

Subject to change, production tolerances have to be taken into account.

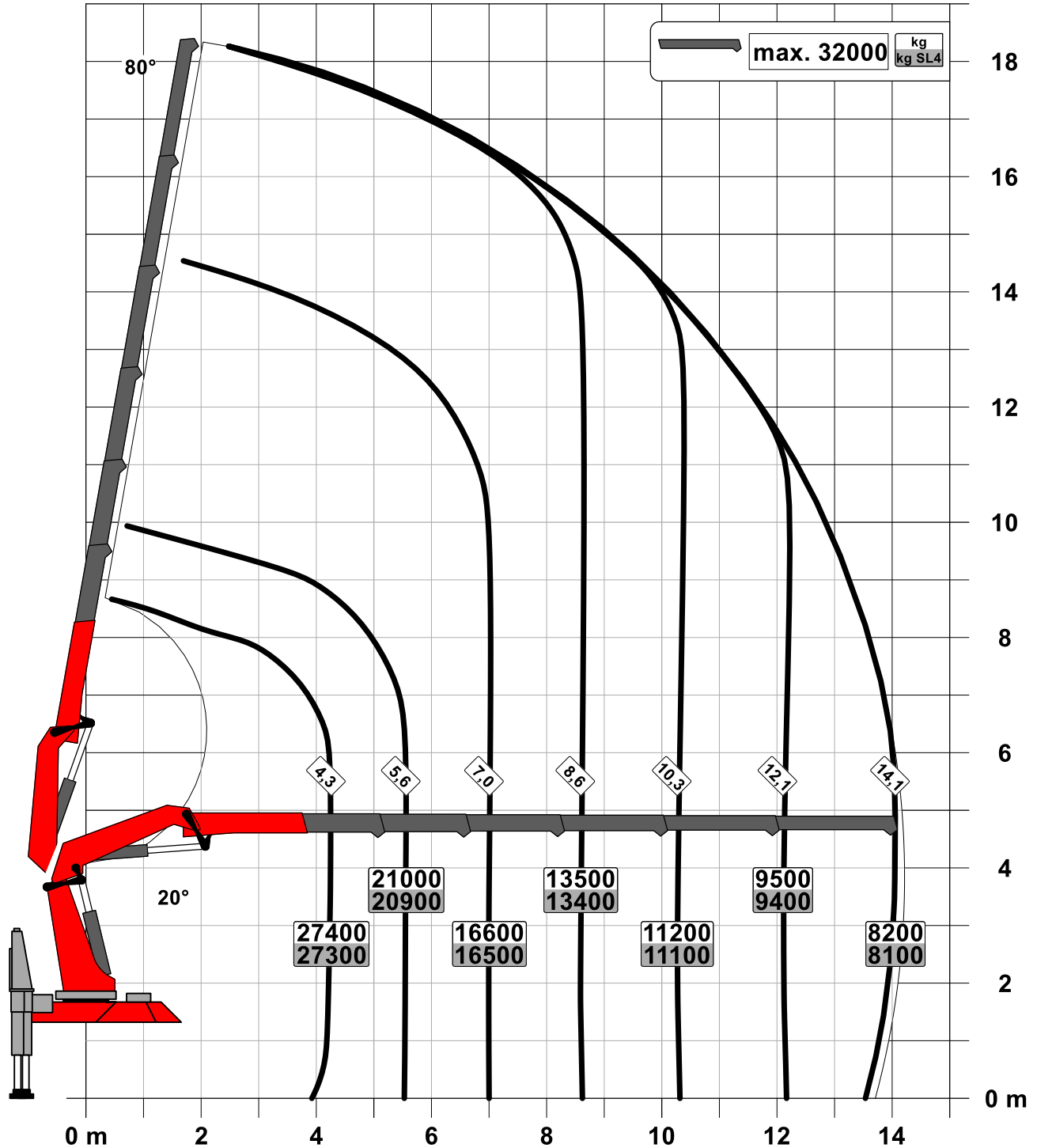
Symbolic crane figure



Lifting capacity diagram PK 165.002 TEC E

Subject to change, production tolerances have to be taken into account.

Symbolic crane figure



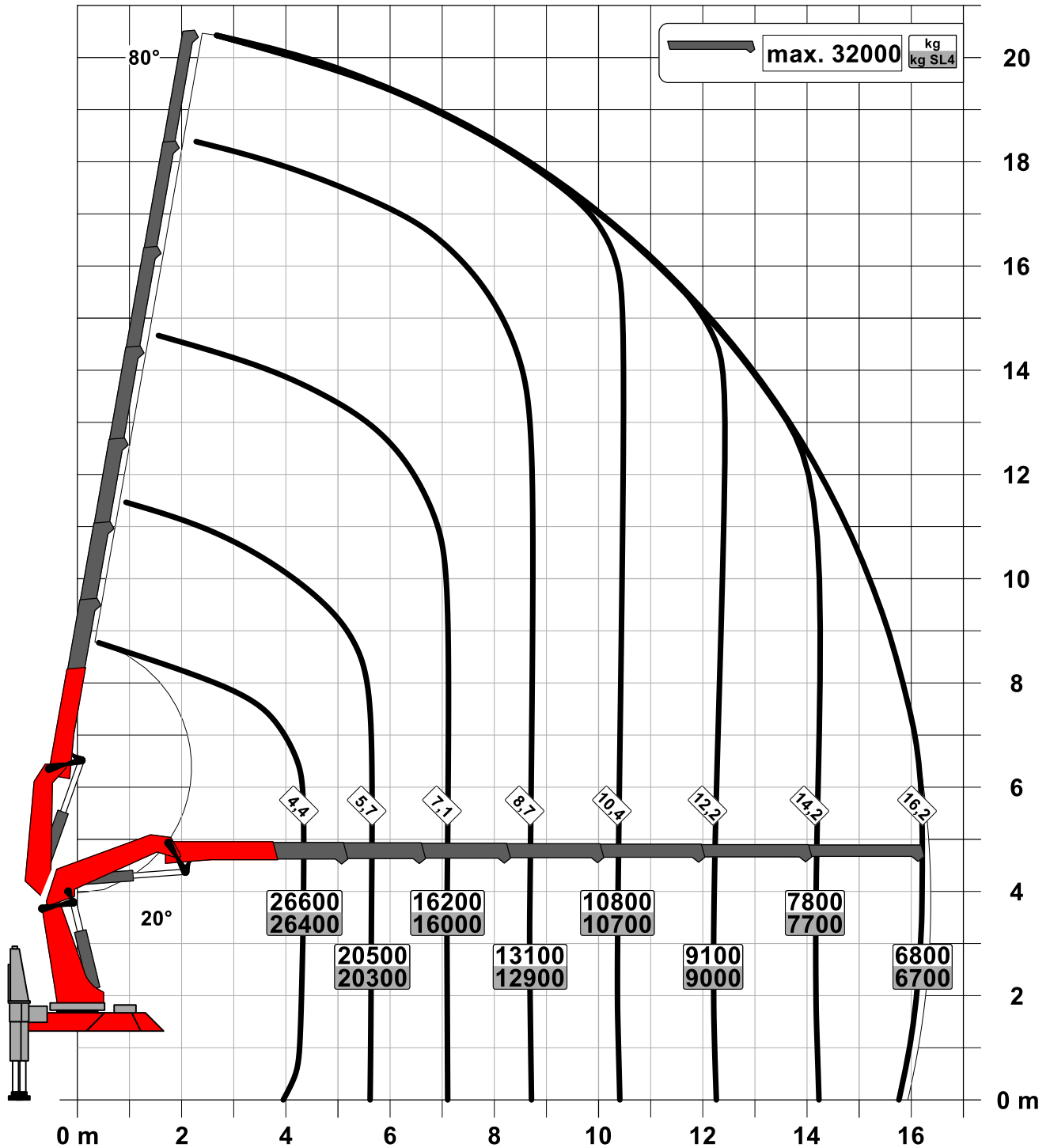
For Rope winch load capacity refer to page

Page 020.21000 3.5t

Page 020.21100 4.5t

Subject to change, production tolerances have to be taken into account.

Symbolic crane figure



For Rope winch load capacity refer to page

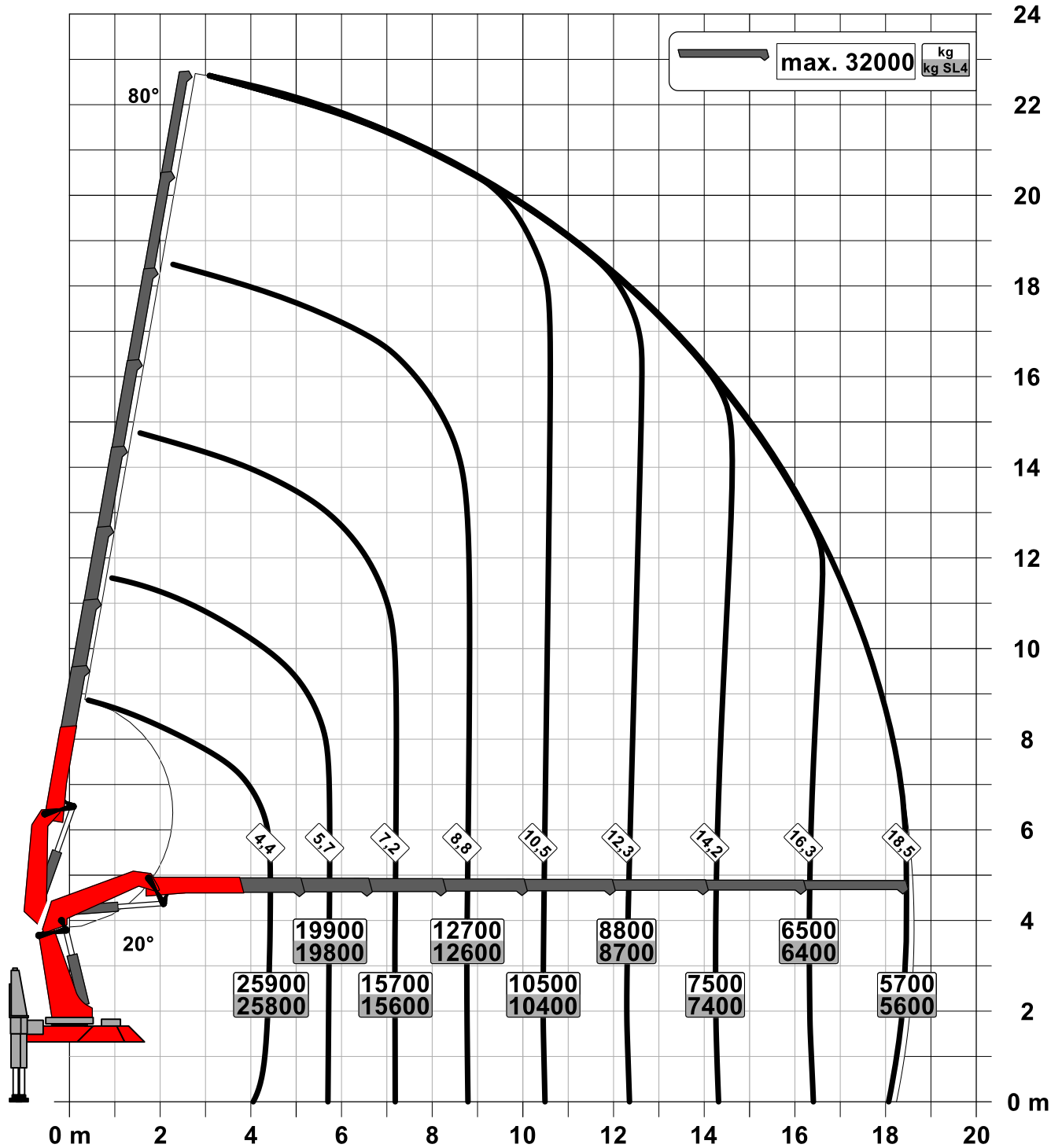
Page 020.21000 3.5t

Page 020.21100 4.5t

Lifting capacity diagram PK 165.002 TEC G

Subject to change, production tolerances have to be taken into account.

Symbolic crane figure



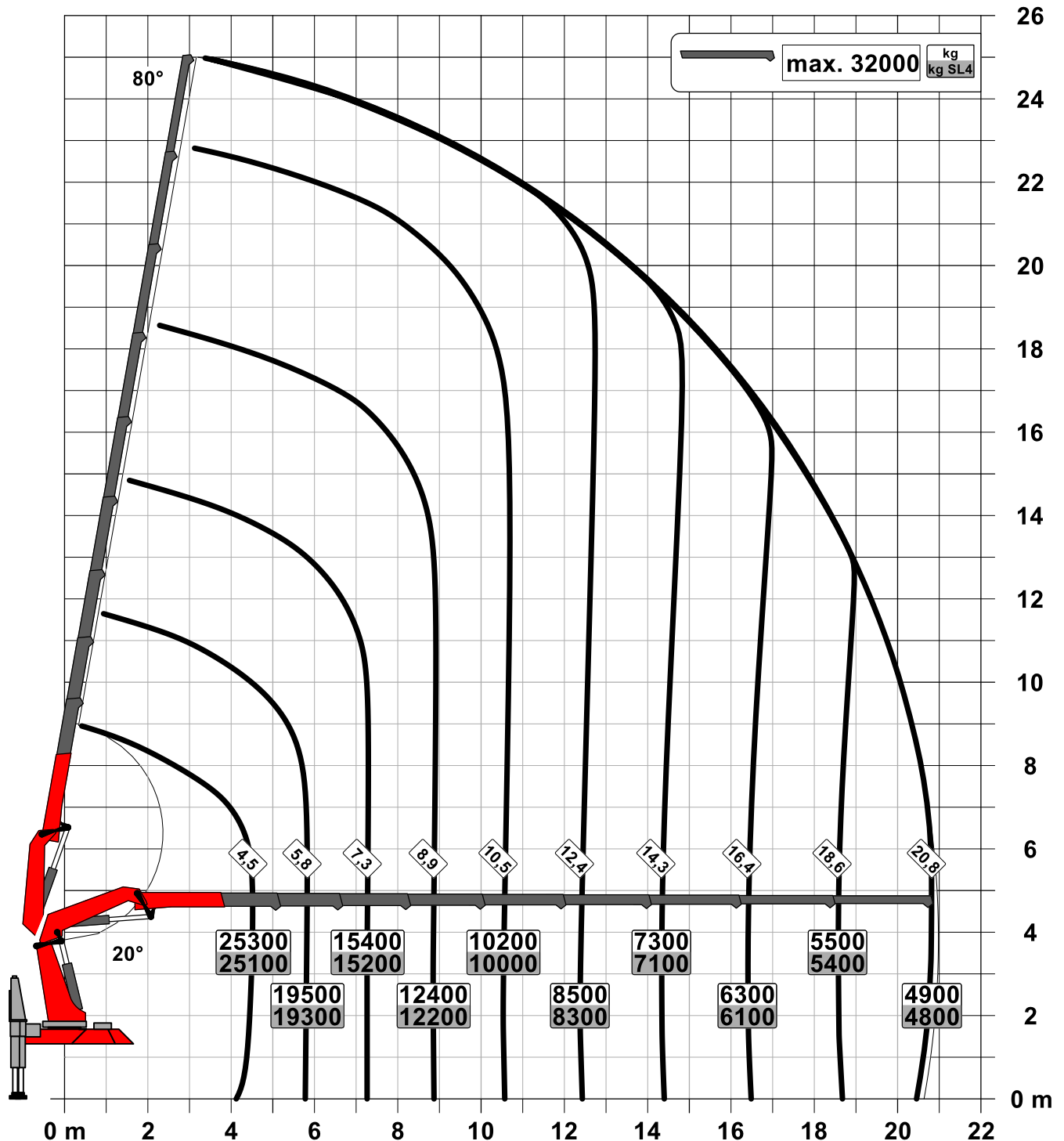
For Rope winch load capacity refer to page

Page 020.21000 3.5t

Page 020.21100 4.5t

Subject to change, production tolerances have to be taken into account.

Symbolic crane figure



For Rope winch load capacity refer to page

Page 020.21000 3.5t

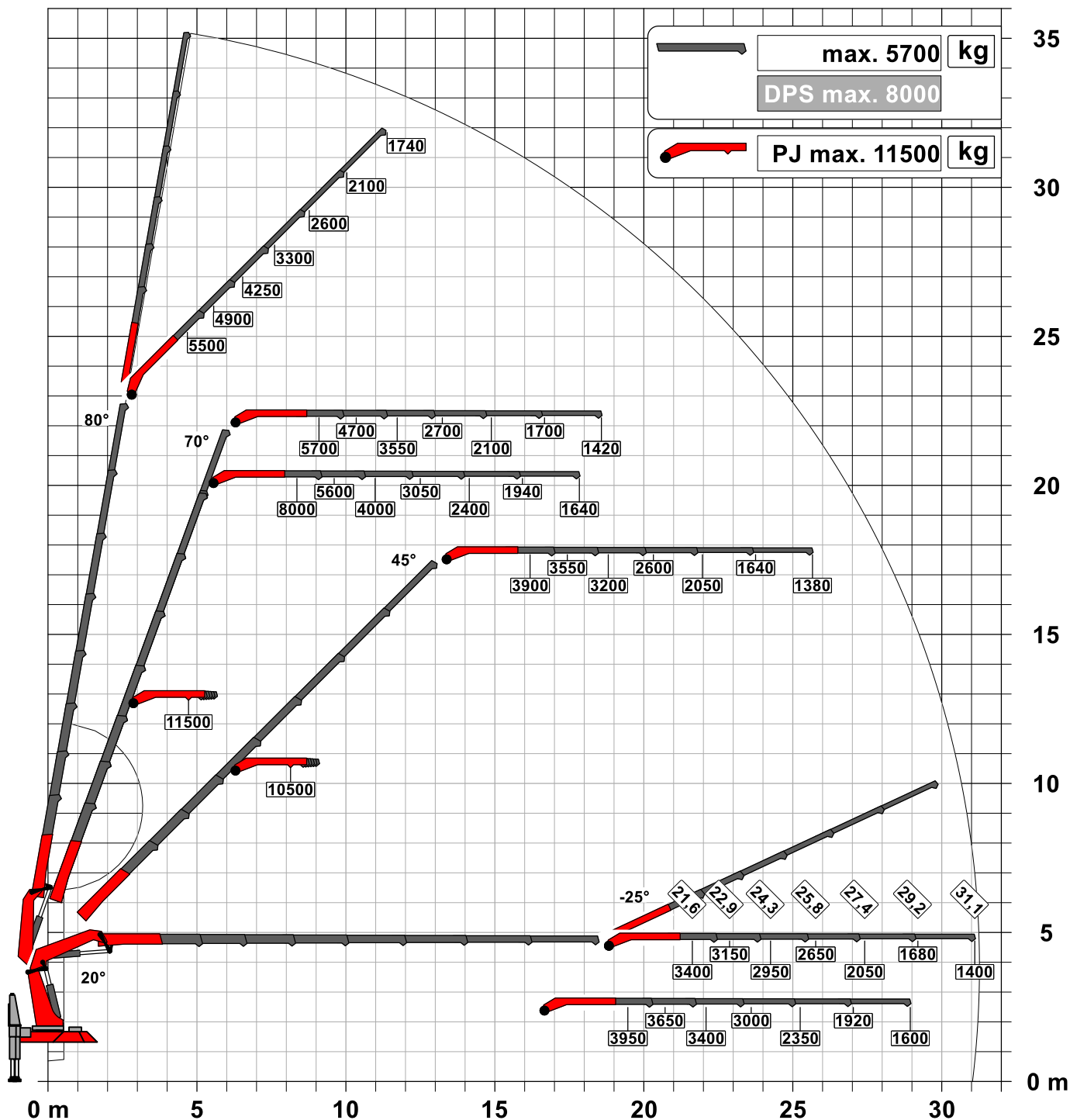
Page 020.21100 4.5t

Lifting capacity diagram PK 165.002 TEC G PJ240 E DPS+

Subject to change, production tolerances have to be taken into account.

Symbolic crane figure

DPS ^{plus}
Dual Power System



The load capacities as per chart are not reached when using hose equipment on the Fly-Jib.



For Rope winch load capacity refer to page

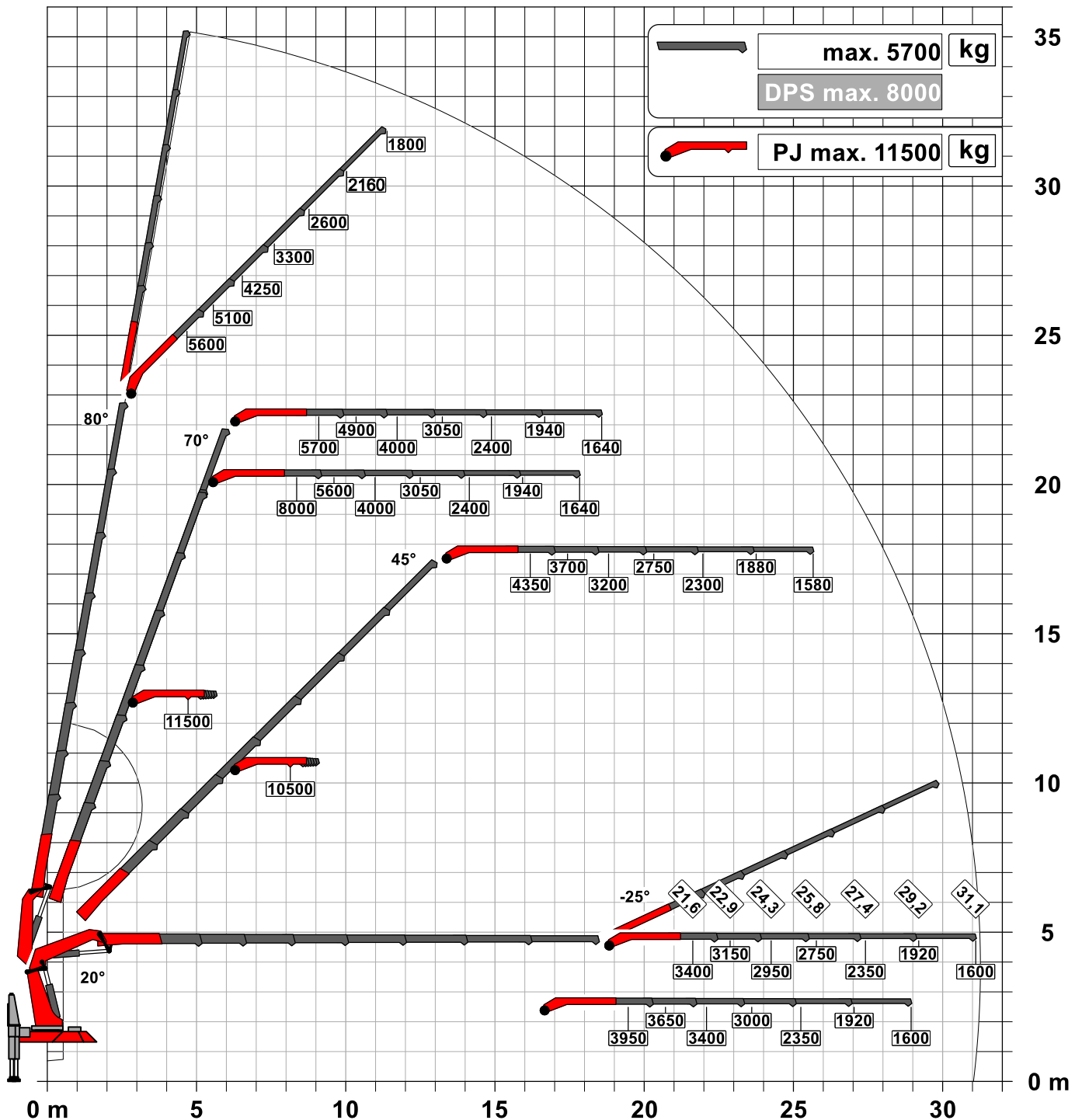
Page 020.21000 3.5t

Subject to change, production tolerances have to be taken into account.

Symbolic crane figure

DPS-C

Dual Power System



The load capacities as per chart are not reached when using hose equipment on the Fly-Jib.



For Rope winch load capacity refer to page

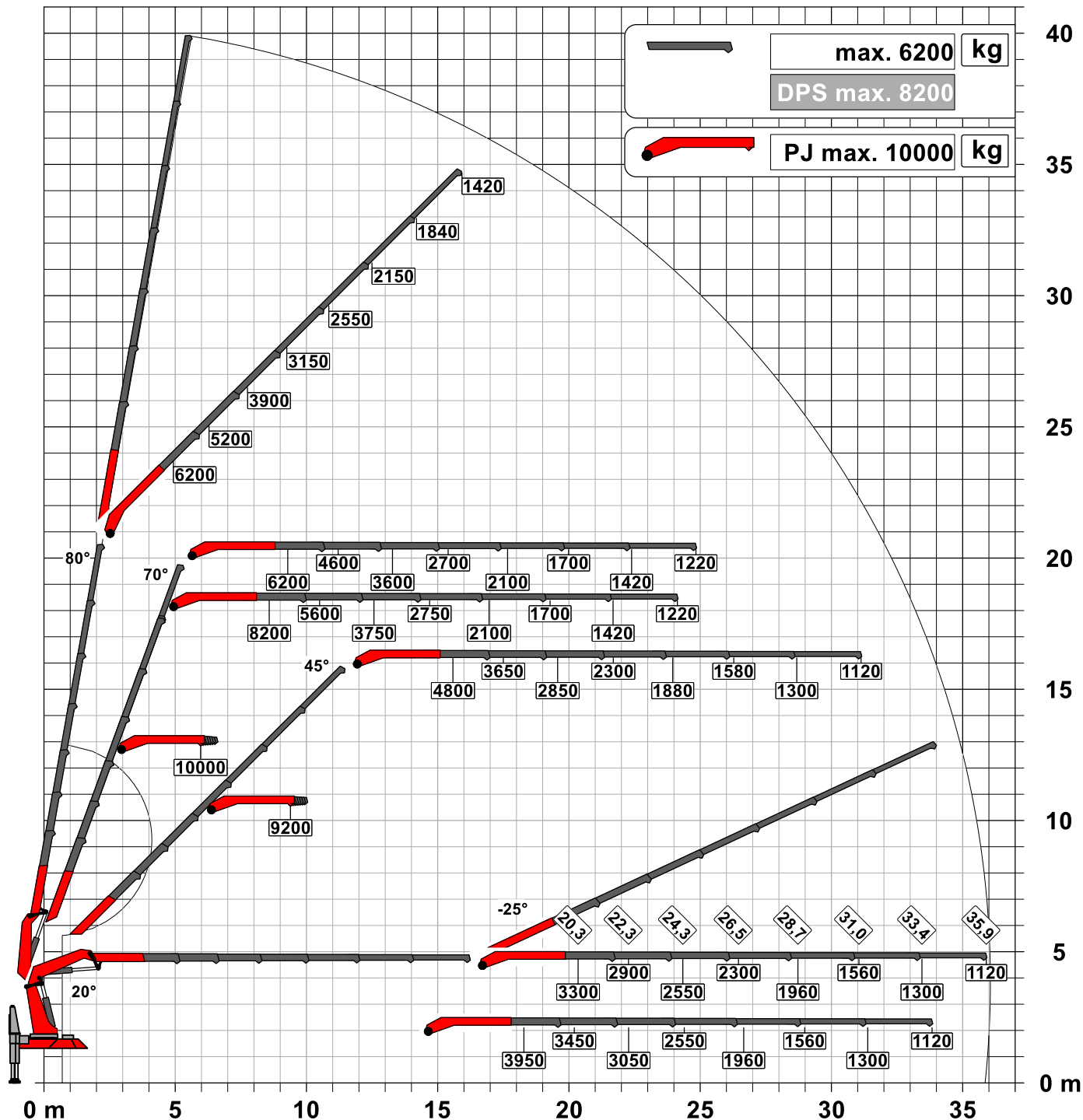
Page 020.21000 3.5t

Subject to change, production tolerances have to be taken into account.

Symbolic crane figure

DPS-C

Dual Power System



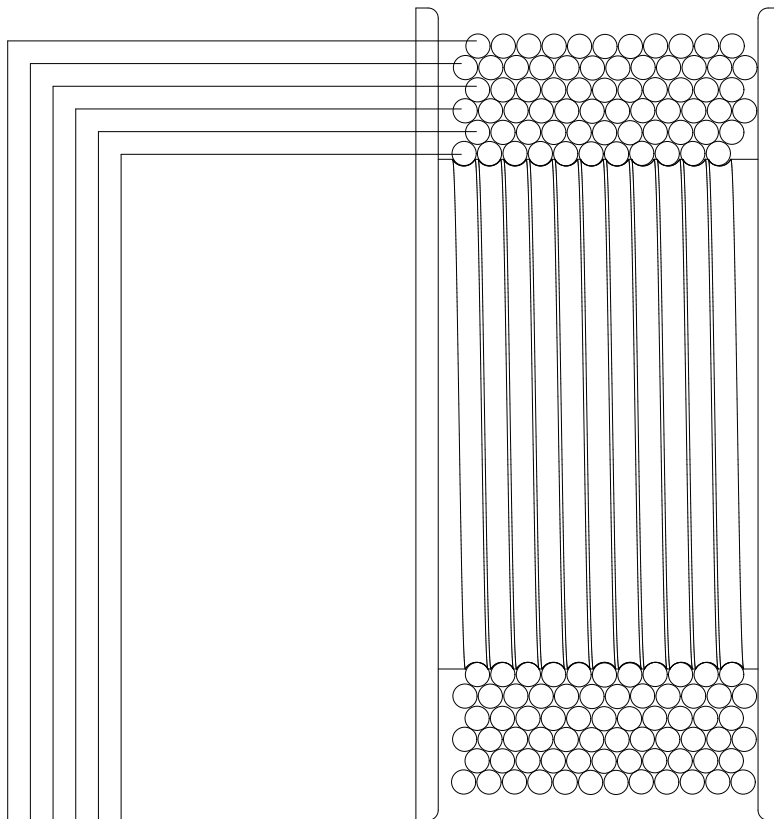
The load capacities as per chart are not reached when using hose equipment on the Fly-Jib.


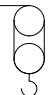
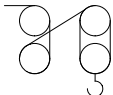


For Rope winch load capacity refer to page

Page 020.21100 4.5t

Subject to change, production tolerances have to be taken into account.

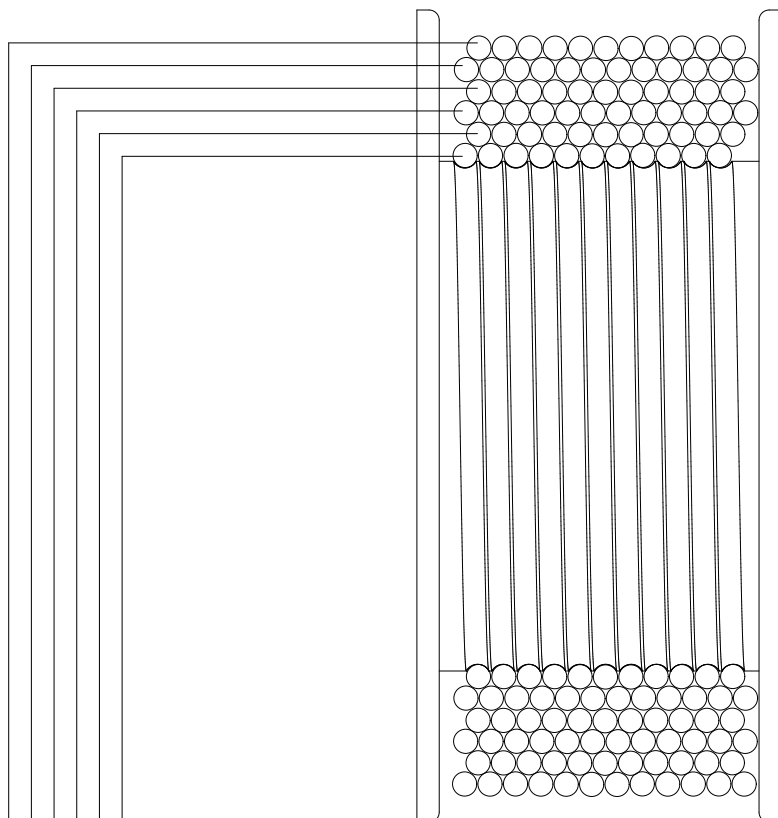


Strands			Strands			Strands		
1STRAN			2STRAN			4STRAN		
								
	Load capacity	Wire reception		Load capacity	Wire reception		Load capacity	Wire reception
1	3500 kg [7,720 lb]	13,1 m [43'0"]		7000 kg [15,430 lb]	13,1 m [43'0"]		14000 kg [30,860 lb]	13,1 m [43'0"]
2	3260 kg [7,190 lb]	26,2 m [85'11"]		6520 kg [14,370 lb]	26,2 m [85'11"]		13040 kg [28,750 lb]	26,2 m [85'11"]
3	3050 kg [6,720 lb]	41,2 m [135'2"]		6100 kg [13,450 lb]	41,2 m [135'2"]		12200 kg [26,900 lb]	41,2 m [135'2"]
4	2870 kg [6,330 lb]	56,1 m [184'1"]		5740 kg [12,650 lb]	56,1 m [184'1"]		11480 kg [25,310 lb]	56,1 m [184'1"]
5	2705 kg [5,960 lb]	73,1 m [239'10"]		5410 kg [11,930 lb]	73,1 m [239'10"]		10820 kg [23,850 lb]	73,1 m [239'10"]
6	2560 kg [5,640 lb]	89,8 m [294'7"]		5120 kg [11,290 lb]	89,8 m [294'7"]		10240 kg [22,570 lb]	89,8 m [294'7"]

Weights of load handling devices are part of the load lifted and must be deducted from the capacity.
Weight of the load handling equipment must be deducted from the lifting capacity.

Load capacity-Rope winch 4.5t

Subject to change, production tolerances have to be taken into account.



Strands		
1STRAN		
	Load capacity	Wire reception
1	4500 kg [9,920 lb]	13,2 m [43'4"]
2	4150 kg [9,150 lb]	26,5 m [86'11"]
3	3850 kg [8,490 lb]	42,0 m [137'1"]
4	3560 kg [7,850 lb]	57,3 m [188'0"]
5	3360 kg [7,410 lb]	75,0 m [246'1"]
6	3160 kg [6,970 lb]	92,5 m [303'6"]

Strands		
2STRAN		
	Load capacity	Wire reception
1	9000 kg [19,840 lb]	13,2 m [43'4"]
2	8300 kg [18,300 lb]	26,5 m [86'11"]
3	7700 kg [16,975 lb]	42,0 m [137'1"]
4	7120 kg [15,700 lb]	57,3 m [188'0"]
5	6720 kg [14,820 lb]	75,0 m [246'1"]
6	6320 kg [13,930 lb]	92,5 m [303'6"]

Strands		
4STRAN		
	Load capacity	Wire reception
1	18000 kg [39,680 lb]	13,2 m [43'4"]
2	16600 kg [36,600 lb]	26,5 m [86'11"]
3	15400 kg [33,950 lb]	42,0 m [137'1"]
4	14240 kg [31,400 lb]	57,3 m [188'0"]
5	13440 kg [29,640 lb]	75,0 m [246'1"]
6	12640 kg [27,860 lb]	92,5 m [303'6"]

Weights of load handling devices are part of the load lifted and must be deducted from the capacity.
Weight of the load handling equipment must be deducted from the lifting capacity.

